

TMI ENGINEERING INFORMATION DOCUMENT CONTROL

Upcoming Changes

MODEL: 383W		TMI ISSUE NUMBER: 383WPC0164		DATE OF ISSUE: 09/27/2006	
CLASSIFICATION	1	DRAWING (PROT) (PROD)		6	PARTS ROUTING INSTRUCTIONS
	2	PARTS LIST (PROT) (PROD)		7	EVALUATION REPORT
	3	SPECIFICATIONS		8	ENGINEERING REPORT
	4	E.C.I. #	383WAF0128	9	T.S.L., T.M.S., ETC.
	5	E.C.R. #		10	Q.P.R.
	11	OTHER			
DESCRIPTION OF CONTENTS	SEE ATTACHED DOCUMENTATION FOR ECI DETAILS				
					REQUIRED IMPLEMENTATION DATE: ASAR
DESIGN/ENGINEERING COMMENTS	IMDS Required: <input checked="" type="radio"/> Yes <input type="radio"/> No				
					ACTUAL IMPLEMENTATION DATE:
PRODUCTION CONTROL COMMENTS	90200-10009		71988-00010-B		
	72702-X7C00-B		71907-00010-C		
	71959-X7C00-C		71907-00020-B		DATE PC RECEIVED: 09/22/2006
PARTS LIST PGS:	ATTACHED:	CAD: <input checked="" type="radio"/> YES		TO FOLLOW	
DRY PGS:	ATTACHED: Y	NO		NO NEED	

DISTRIBUTION MATRIX

GENERAL OFFICE:

1	SALES		DEVELOPMENT	1	BOM - TRACIE GILLILAND
1	PURCHASING		PATTERN ENGINEERING	1	ECI COORD - KEI OKUSHI
1	PROGRAM MGR	1	DESIGN - GLORIA DENNIS		
1	PROGRAM ENG		PRODUCTION CONTROL		

PLANTS:					
MODESTO		PC - CHRISTINE BOUGHTON	BARTLETT	SARAH ROSS	
BARDSTOWN		PC - JACKIE SMITH	TORREON	GEORGINA GOMEZ	
HARRODSBURG		PC - BONNIE MURPHY	ELMIRA	JUSTINE BEDDOE	
LEITCHFIELD		PC - DENISE WYMAN	TB-AMERICA		
NICHOLASVILLE		PC - NIKKI MOSHER	TB-JAPAN		
ATS	1	PC - ALISA HILL	JCI		
TEXAS		PC - LARRY BEST			

PRODUCTION CONTROL AT PLANTS:

DATE REC'D	INITIALS	ACTUAL IMPLEMENTATION DATE

- TO VERIFY RECEIPT, PLEASE DO THE FOLLOWING:
1. Complete the Actual Implementation Date box.
 2. Initial & complete the Date Received box.
 3. Fax ECI Header to G.O. Document Control
- ATTN: GLORIA DENNIS

383W Model 383WAF0128 No. 5713 TEL 5713 切替に対する希望・条件 Change Condition Requested by Engineer 切替出来次第/As soon as ready A) 単独/Independent Change	承認 (P.M.) Approved 山本 隆 Date 9.19 担当設計室 Eng. Design TBA24 Date 9.19 承認 Approved 神谷 毅 9.19 調査 Checked 高野 洋 06/19/18 Customer No. Customer No. 作成 Prepared 高野 洋 06/19/18 R/C, P/F切替制約 Restriction on Change over Timing Concerning Certification 無し/Unrestricted	共通先 Common 関係先 Related 1 / 5 Page
---	--	--

Key Model	Group	Variation/Block Code	Key Model	Group	Variation/Block Code	Key Model	Group	Variation/Block Code
001 383W	7100AC	P-NA, P-NB, P-PA, P-PB						
002 383W	7100AC	P-NA, P-PA						
003 383W	7100AC	P-NB						
004 383W	7100AC	P-NB, P-PB						
005 383W	7100AC	X-PA						

383W-R-0164

TRIM MASTERS, INC.
DESIGN DEPARTMENT DATA

APPROVED - CHECKED - ORIGINATED

Ben
Susan
Z. K.
5/27/18

車種 383W
Model

設変切替依頼書 No.2

ENGINEERING CHANGE INSTRUCTIONS No.2

互換性 Interchangeability
 旧PP APVO NVO NP X:PVX NVO
 PP BPVO NVX NP Y123:
 PP CPVO NVX PVD NVO
 PP DPVX NVX NP Z:PVX NVO
 C,Y,Z-Type Major

No. 383WAF0128

Page 2 / 5

No.	工程 Routing (Process)	区分 Key	レベル Lvl	CC Co/Co	旧品番 Previous Part No.	新品番 New Part No.	品名 Part Name	選択 Option	状態 Condition	理由 Reason	変更事項 Revision	摘要 Apply	出図 CAD	出図予定 Dwg. Issue	出図 Dwg. Com	旧PP 五NP
1	9/19	001	01		71959-X7C00-B	71959-X7C00-C ✓	HOLDER, RR SEAT HEAD REST				形状変更/Shape Change		0		A	
2	9/19	001	01		71988-0C010-A	71988-0C010-B ✓	KNOB, RR SEAT HEADREST				材質変更/Material Change		0		A	
3	9/19	001	01		72702-X7C00-A	72702-X7C00-B ✓	BOLT SEAT SET				形状変更/Shape Change		0		A	
4	Dwg 9/20	002	01		71907-0C020-A	71907-0C020-B ✓	ADJUSTER SUB-ASSY, R SEAT HEADREST				構成部品変更/Component Part Change		0		A	
5		002	02		90206-10009		WASHER, WAVE	2			形状変更/Minor E/C		N		X	
6		003	01		71907-0C030-A	71907-0C030-B ✓	ADJUSTER SUB-ASSY, R SEAT HEADREST				使用追加/Additional Adoption		N		X	
7		003	02		90206-10009		WASHER, WAVE	2			構成部品変更/Component Part Change		0		A	
8	Dwg 9/20	004	01		71907-0C010-B	71907-0C010-C ✓	ADJUSTER SUB-ASSY, R SEAT HEADREST				材質変更/Minor E/C		N		X	
9		004	02		90206-10009		WASHER, WAVE	2			使用追加/Additional Adoption		N		X	
10		005	01		52161-02020-A ✓		PIECE, RR BUMPER, RH	1			新設/New Adoption		N		X	
11																
12							Washer Part same as 52161-16010									
13																
14																
15																
16																
17																
18																

TRIM MASTERS, INC.
 DESIGN DEPARTMENT DATE:
 APPROVED [Signature] CHECKED [Signature] ORIGINATED [Signature]
 383WPC0169

車種 383W
Model

設変切替依頼書 No.3

ENGINEERING CHANGE INSTRUCTIONS No.3

Page

No.

383WAF0128

3 / 5

No.	Group	Group Name	Part / Eik Name	ALL	件 Condition	変更事項 REVISION	構成部品変更/Component Part Change
1	7100AC		3RD LH 60 SEAT BELT X-PA	ALL			同左/No Change
2							
3							
4							
5							
6							
7							
8							
9							
10							
11							
12							
13							
14							
15							
16							

383WAF0128

TRIM MASTERS, INC

DESIGN DEPARTMENT	DATE
APPROVED	CHECKED
ORIGINATED	

技術管理部設計管理室
Staff

TOYOTA BOSHOKU CORPORATION

Technical Administration Dept.
Engineering & Design Administration

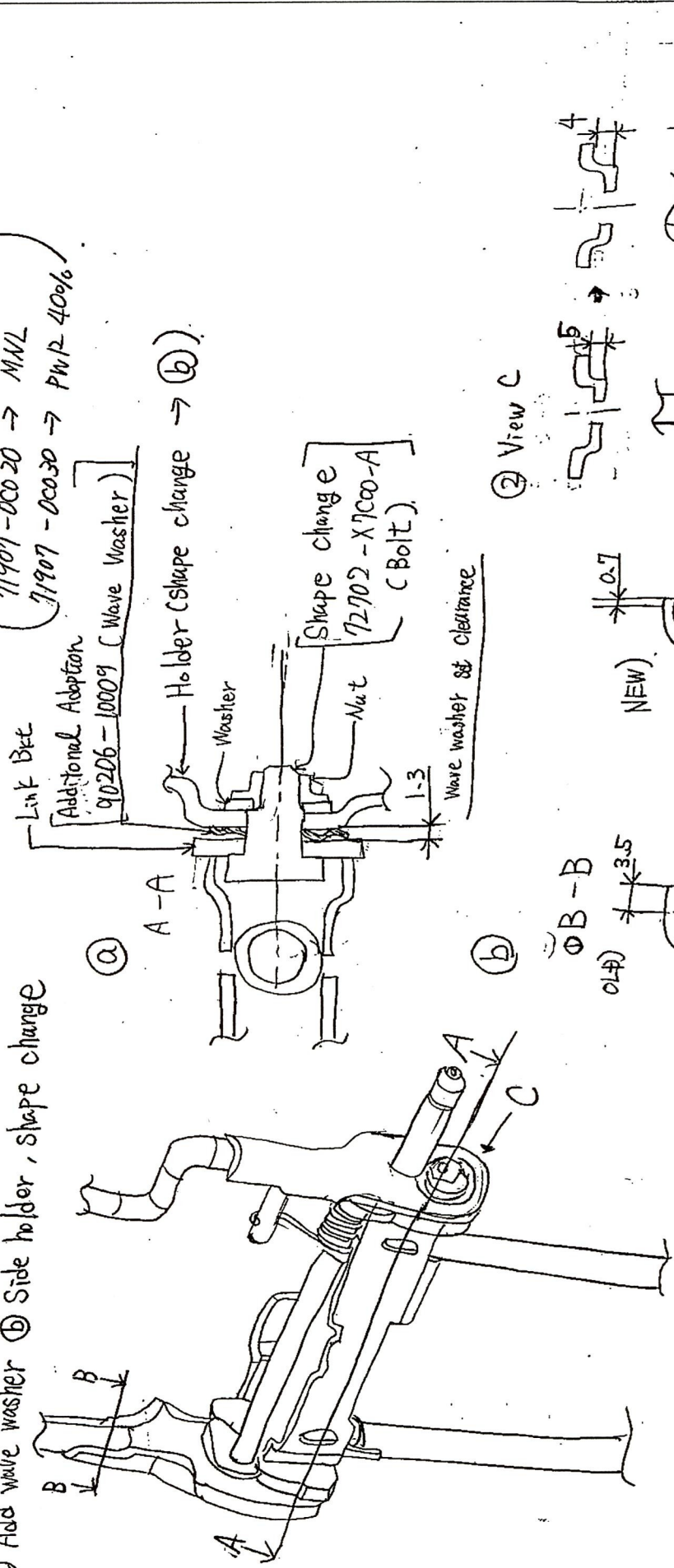
ORIGINAL

SEP 20 2006

變更事項 (箇所・略図)

I [3RΦ] Side Headrest (MNL, PWR) ⇒ Component part No. change.
 (71907-00010 → PWR 60%)
 (71907-00020 → MNL)
 (71907-00030 → PWR 40%)

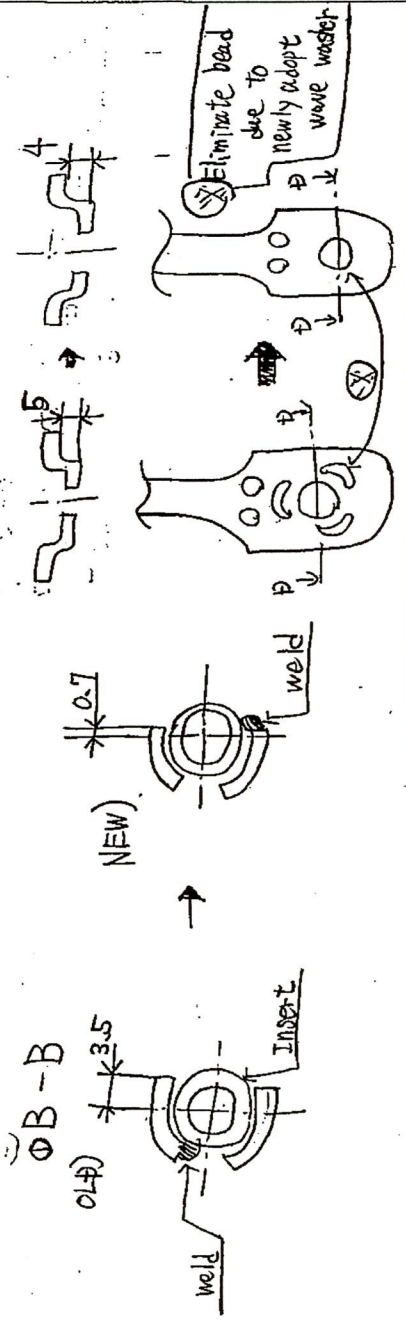
Ⓐ Add wave washer
 Ⓑ Side holder, shape change



383w/c0164

TRIM MASTERS, INC.			
DESIGN DEPARTMENT DATE:			
APPROVED	CHECKED	ORIGINATED	
ZLW	YK	SOM	

② View C



車種 383W
Model

設定切替依頼書 No.4

ENGINEERING CHANGE INSTRUCTIONS No.4

変更事項 (箇所・略図)

Page

No.

383WAF0128

5 / 5

II

71988-00070-B

◦ Side H/R knob → Material change.

old)

TSM5515G-2 ⇒ TSM5516G-1
New)

III

[Router Fixing CLIP]

52161-00020-A → Additional Adoption

(TB → New adoption due to TMC part No.)

383WPC0164

TRIM MASTERS, INC.			
DESIGN DEPARTMENT DATE:			
APPROVED	CHECKED	ORIGINATED	
<i>[Signature]</i>	<i>[Signature]</i>	<i>[Signature]</i>	<i>[Signature]</i>