

**TMI ENGINEERING INFORMATION
DOCUMENT CONTROL**

10

MODEL: **383W** TMI ISSUE NUMBER: **383WPC0203** DATE OF ISSUE: **12/14/2006**

1 DRAWING (PROD) (PROD)	6 PARTS ROUTING INSTRUCTIONS
2 PARTS LIST (PROD) (PROD)	7 EVALUATION REPORT
3 SPECIFICATIONS	8 ENGINEERING REPORT
4 E.C.I. #	9 T.S.I., T.M.S., ETC.
5 B.C.R. #	10 Q.P.R.
11 OTHER	

SEE ATTACHED DOCUMENTATION FOR ECI DETAILS

DESCRIPTION OF CONTENTS

REQUIRED IMPLEMENTATION DATE: **J1A**

DESIGN/ENGINEERING COMMENTS

IMDS Required: Yes No

ACTUAL IMPLEMENTATION DATE:

PRODUCTION CONTROL COMMENTS

DATE PO RECEIVED: **11/28/2006**

PARTS LIST PEGS: ATTACHED: YES TO FOLLOW

DRAWINGS: ATTACHED: NO NO NEED

GENERAL OFFICE:

1 SALES	1	DEVELOPMENT	1	BOM - TRACIE GILLILAND
1 PURCHASING	1	PATTERN ENGINEERING	1	ECI COORD - KEI OKUSHI
1 PROGRAM MGR	1	DESIGN - GLORIA DENNIS		
1 PROGRAM ENG	1	PRODUCTION CONTROL		

PLANTS:

MODESTO	PC - RANDALL GABEREL	BARTLETT	SARAH ROSS
BARDESTOWN	PC - JACKIE SMITH	TORREON	GEORGINA GOMEZ
HARRODSBURG	PC - BONNIE MURPHY	ELMIRA	DANIELLE TUCKER
LEITCHFIELD	PC - DENISE WYMAN	TB-AMERICA	
NICHOLASVILLE	PC - CINDY WRENN	TB-JAPAN	
ATS	1 PC - ALISA HILL	JCI	
TEXAS	PC - LARRY BEST		

PRODUCTION CONTROL AT PLANTS:

DATE RECD	INITIALS	ACTUAL IMPLEMENTATION DATE

- TO VERIFY RECEIPT, PLEASE DO THE FOLLOWING:**
1. Complete the Actual Implementation Date box.
 2. Initial & complete the Date Received box.
 3. Fax ECI Header to G.O. Document Control
- ATTN: GLORIA DENNIS

383W 設 變 切 替 依 頼 書

ENGINEERING CHANGE INSTRUCTIONS

No. 383WP0406

OHMORI

PAGE (1/26)

要 旨 Purpose	切替に対する希望・条件 Change Condition Requested by Engineer	事前連絡 Advance Notice	R/C・F/F切替制約 Restriction on Change over Timing Concerning Certification	検査承認 TMC-Es	重複先 Overlap	共用先 Common	関係先 Related
運付け・見映光向上/FITTING/APPEARANCE その他/OTHERS	JYAから/FROM JIA(001) (A)単独/Independent Change 全品番/All Part No.	TMC PPK OZAKI-SAN TMI TOM-SAN	無/Unrestricted	DM530			

Key	Model	Group	Cmp.	Variation / Block Code	Key	Model	Group	Cmp.	Variation / Block Code	Key	Model	Group	Cmp.	Variation / Block Code
適用 範囲 Applicability	001	383W	7100											

工 程 Routing(Process)	区分 Key	構成Lv. 階 階	Group Code	旧品番 Previous Part No.		選択SI. 個数Qt.	補修 Ser. Det.	品 名 Part Name	変更事項 Revision	後日出回予定日 Later Dwg. Issue	Condition RDDP No.	出回Dwg. 国内 Jpn.	互換性Int. 内 Eng.	新 SP	CAD 観C
				新品番 New Part No.	→										
	0	001		71017-0C080-G	→H		FRAME SUB-ASSY, RR S EAT BACK, RH	形状変更/Shape Change 塗装追加/ADD PAINT	2007/01/26	HNH2-6109	LS	LS	A	X	N
	0	001		71017-0C090-G	→H		*	形状変更/Shape Change	2007/01/26	HNH2-6109	LS	LS	A	X	N
	0	001		71017-0C100-G	→H		*	形状変更/Shape Change 塗装追加/ADD PAINT	2007/01/26	HNH2-6109	LS	LS	A	X	N
	0	001		71018-0C060-G	→H		FRAME SUB-ASSY, RR S EAT BACK, LH	形状変更/Shape Change	2007/01/26	HNH2-6109	LS	LS	A	X	N
	0	001		71018-0C070-G	→H		*	形状変更/Shape Change	2007/01/26	HNH2-6109	LS	LS	A	X	N
	0	001		71018-0C080-G	→H		*	形状変更/Shape Change	2007/01/26	HNH2-6109	LS	LS	A	X	N
383W 0178	0	001		71087-0C010	→A		BOARD SUB-ASSY, RR S EAT BACK, CTR	形状変更/Shape Change	2007/01/26	HNH2-6109	LS	LS	A	X	N
	0	001		71087-0C020	→A		*	形状変更/Shape Change	2007/01/26	HNH2-6109	LS	LS	A	X	N
	0	001		71097-0C030	→A		PAD SUB-ASSY, NO.2 S EAT HEADREST	形状変更/Shape Change	2007/01/26	HNH2-6109	LS	LS	A	X	N
	0	001		71097-0C040	→A		*	形状変更/Shape Change	2007/01/26	HNH2-6109	LS	LS	A	X	N
	0	001		71097-0C050	→A		*	形状変更/Shape Change	2007/01/26	HNH2-6109	LS	LS	A	X	N
	0	001		71397-0C020-B	→C		COVER, CTR SEAT HING E, UPR RH	形状変更/Shape Change	2007/01/26	HNH2-6109	LS	LS	A	X	N

承認(CE) Approved	Date	担当室 Eng. Design	INTERIOR DESIGN DEPT.	承認 Approved	Date	調査 Checked	Date	作成 Prepared	Date	Tel: 5281 Fax: 5113
--------------------	------	--------------------	-----------------------	----------------	------	---------------	------	----------------	------	------------------------

設 変 切 替 依 頼 書 / ECI No.1

HINO MOTORS, NOV 26, 2006

383WP0406

APPROVED APPROVED CHECKED

216 SF 9A

ORIGINAL

INB-3G

Printed Time 2006/11/17 11:16:25

383W 設變切替依賴書 ENGINEERING CHANGE INSTRUCTIONS

担当職 Eng.Design
HNH22

電話 TEL
5381

作成 Prepared
OHMORI

No. 383WP0406

Page
2

工 程 Routing(Process)	区分 Key	備成 Lvl 用 部 PP NP	Group Code	旧品番 Previous Part No.		選択SI. 個数Qt.	標納 Ser. Det.	品 名 Part Name	更 更 事 項 Revision	後日出図予定日 Later Dwg. Issue	Condition RDDP No.	出 國 出 荷		互 換 性 Int.		CAD 認C
				新品番 New Part No.	変更							国内 Job. Eng.	海外 Job.	旧 型	新 型	
383WPC0176 X	001			71398-0C020-B	->C			COVER, CTR SEAT HING E, UPR LH	形状変更/Shape Change	2007/01/26	HNH2-6109	LS	LS	A	X	N
	0	001		71651-0C150-A	->B			PAD, RR SEAT BACK, R H	形状変更/Shape Change	2007/01/26	HNH2-6109	LS	LS	A	X	N
	0	001		71651-0C170-A	->B			*	形状変更/Shape Change	2007/01/26	HNH2-6109	LS	LS	A	X	N
	0	001		71652-0C100-A	->B			PAD, RR SEAT BACK, L H	形状変更/Shape Change	2007/01/26	HNH2-6109	LS	LS	A	X	N
	0	001		71652-0C130-A	->B			*	形状変更/Shape Change	2007/01/26	HNH2-6109	LS	LS	A	X	N
	0	001		71667-0C010-B	->C			PAD, RR SEAT BACK, C TR	図面修正/DRAWING MODIFICATION	2007/01/26	HNH2-6109	LS	LS	A	X	N
	0	001		71667-0C020-A	->B			*	図面修正/DRAWING MODIFICATION	2007/01/26	HNH2-6109	LS	LS	A	X	N
	0	001		71701-0C010-A	->B			BOARD SUB-ASSY, RR S EAT BACK, RH	形状変更/Shape Change	2007/01/26	HNH2-6109	LS	LS	A	X	N
	0	001		71701-0C020	->A			*	形状変更/Shape Change	2007/01/26	HNH2-6109	LS	LS	A	X	N
	0	001		71701-0C030	->A			*	形状変更/Shape Change	2007/01/26	HNH2-6109	LS	LS	A	X	N
383WPC0178 X	001			71701-0C040	->A			*	形状変更/Shape Change	2007/01/26	HNH2-6109	LS	LS	A	X	N
	0	001		71701-0C050	->A			*	形状変更/Shape Change	2007/01/26	HNH2-6109	LS	LS	A	X	N
	0	001		71701-0C060	->A			*	形状変更/Shape Change	2007/01/26	HNH2-6109	LS	LS	A	X	N
383WPC0178 X	001			71702-0C010	->A			BOARD SUB-ASSY, RR S EAT BACK, LH	形状変更/Shape Change	2007/01/26	HNH2-6109	LS	LS	A	X	N
	0	001		71702-0C020	->A			*	形状変更/Shape Change	2007/01/26	HNH2-6109	LS	LS	A	X	N
383WPC0178 X	0	001		71702-0C030-A	->B			*	形状変更/Shape Change	2007/01/26	HNH2-6109	LS	LS	A	X	N
	0	001		71702-0C040	->A			*	形状変更/Shape Change	2007/01/26	HNH2-6109	LS	LS	A	X	N
	0	001		71702-0C050	->A			*	形状変更/Shape Change	2007/01/26	HNH2-6109	LS	LS	A	X	N
	0	001		71702-0C060	->A			*	形状変更/Shape Change	2007/01/26	HNH2-6109	LS	LS	A	X	N
383WPC0178 X	001			71878-0C030-A	->B			COVER, RR SEAT RECL NING, INNER RH	形状変更/Shape Change	2007/01/26	HNH2-6109	LS	LS	A	X	N

設變切替依賴書 / ECINo.3

HINO MOTORS LTD.

原裝製造廠

H08500

Printed 2006/11/17
Time 11:10:25

383WPC0178

TRIM MASTERS, INC. NOV 29 2006

DESIGN DEPARTMENT DATE

APPROVED	APPROVED	DATE
	ZL SF	9A

ORIGINAL

383W 設變切替依賴書 ENGINEERING CHANGE INSTRUCTIONS

担当 職 Eng. Design
HNH22

電話 TEL
5381

作成 Prepared
OHMORI

No. 383WP0406

Page
3

工 程 Routing(Process)	区分 Key	達成 期	Lvl 部	Group Code	旧品番 Previous Part No.		選取 個數Qt.	補給 部	品 名 Part Name	變 更 事 項 Revision	後日出回予定日	Condition	出回Dwg.		交換性Int.		CAD 認C
					新品番 New Part No.	後日出回予定日 Labor Dwg. Issue					RDDP No.	国内 Jpn.	海外 Eng.	旧 形	新 形		
@ "C" Lvl L x	001				71878-0C060-A	->B			COVER, RR SEAT RECLINING, INNER RH	形状変更/Shape Change	2007/01/26	HNH2-6109	LS	LS	A	X	N
@ "C" Lvl L x	001				71879-0C040-A	->B			COVER, RR SEAT RECLINING, INNER LH	形状変更/Shape Change	2007/01/26	HNH2-6109	LS	LS	A	X	N
@ "B" Lvl V x	001				71879-0C050-A	->B			*	形状変更/Shape Change	2007/01/26	HNH2-6109	LS	LS	A	X	N
@ "C" Lvl x	001				71907-0C010-B	->C			ADJUSTER SUB-ASSY, RR SEAT HEADREST	形状変更/Shape Change	2007/01/26	HNH2-6109	LS	LS	A	X	N
@ "B" Lvl x	001				71907-0C020-A	->B			*	形状変更/Shape Change	2007/01/26	HNH2-6109	LS	LS	A	X	N
@ "B" Lvl x	001				71907-0C030-A	->B			*	形状変更/Shape Change	2007/01/26	HNH2-6109	LS	LS	A	X	N
v	001				71970-0C080	->A			HEADREST ASSY, NO. 2 SEAT	形状変更/Shape Change	2007/01/26	HNH2-6109	LS	LS	A	X	N
383WPC0081 x	001				71970-0C090	->A			*	形状変更/Shape Change	2007/01/26	HNH2-6109	LS	LS	A	X	N
b	001				71970-0C110	->A			*	形状変更/Shape Change	2007/01/26	HNH2-6109	LS	LS	A	X	N
o	001				71981-0C010	->A			COVER, NO. 2 SEAT HEADREST	形状変更/Shape Change	2007/01/26	HNH2-6109	LS	LS	A	X	N
pe	001				71981-0C020	->A			*	形状変更/Shape Change	2007/01/26	HNH2-6109	LS	LS	A	X	N
@ "C" Lvl	001				71988-0C010	->A			KNOB, RR SEAT HEADREST	形状変更/Shape Change	2007/01/26	HNH2-6109	LS	LS	A	X	N
o	001				72067-0C010-A	->B			LEVER SUB-ASSY, RR BACK LOCK CONTROL, RH	構成部品変更/COMPONENT PART CHANGE	2007/01/26	HNH2-6121	LS	LS	A	X	N
o	001				72068-0C010-A	->B			LEVER SUB-ASSY, RR BACK LOCK CONTROL, LH	構成部品変更/COMPONENT PART CHANGE	2007/01/26	HNH2-6121	LS	LS	A	X	N
o	001				72160-0C021	->A			TRACK ASSY, RR NO. 1 SEAT, OUTER RH	形状変更/Shape Change	2007/01/26	HNH2-6121	LS	LS	A	X	N
b	001				72160-0C031	->A			*	形状変更/Shape Change	2007/01/26	HNH2-6121	LS	LS	A	X	N
b	001				72170-0C021	->A			TRACK ASSY, RR NO. 1 SEAT, INNER RH	形状変更/Shape Change	2007/01/26	HNH2-6121	LS	LS	A	X	N
b	001				72170-0C031	->A			*	形状変更/Shape Change	2007/01/26	HNH2-6121	LS	LS	A	X	N
o	001				72170-0C051	->A			*	形状変更/Shape Change	2007/01/26	HNH2-6121	LS	LS	A	X	N
o	001				72207-0C010-C	->D			PLATE SUB-ASSY, SEAT TRACK STOP	形状変更/Shape Change	2007/01/26	HNH2-6121	LS	LS	A	X	N

383WP0406

IBIM MASTERS, INC.

APPROVED: [Signature] DATE: NOV 29 2006

ORIGINAL

383W 設變切替依賴書 ENGINEERING CHANGE INSTRUCTIONS

担当室 Eng.Design
HNH22

電話 TEL
5381

作成 Prepared
OHMORI

No. 383WP0406

Page
4

工 程 Routing(Process)	区分 Key	精成Lvl. 昇 降	Group Code	旧品番 Previous Part No.		選択SI 個數Qt.	補給 部 Det.	品 名 Part Name	變更事項 Revision	後日出回予定日 Later Dwg. Issue	Condition		出回Dwg.		互換性 Int.		CAD
				新品番 New Part No.							RDDP No.	國內 Jpn.	海外 Eng.	旧 品	新 品	認 可	
	0	001			72208-0C010-C			PLATE SUB-ASSY, OUT SEAT TRACK LOCK, LH	形状変更/Shape Change	2007/01/28	HNH2-6121	LS	LS	A	X		N
	0	001			72210-0C051			TRACK ASSY, RR NO.1 SEAT, OUTER LH	形状変更/Shape Change	2007/01/26	HNH2-6121	LS	LS	A	X		N
	0	001			72220-0C011			TRACK ASSY, RR NO.1 SEAT, INNER LH	形状変更/Shape Change	2007/01/26	HNH2-6121	LS	LS	A	X		N
	0	001			72220-0C031			*	形状変更/Shape Change	2007/01/26	HNH2-6121	LS	LS	A	X		N
	0	001			72309-0C010-B			HOOK SUB-ASSY, RECLINING CONNECTING	構成部品変更/COMPONENT PART CHANGE	2007/01/26	HNH2-6121	LS	LS	A	X		N
	0	001			72309-0C020-B			*	構成部品変更/COMPONENT PART CHANGE	2007/01/26	HNH2-6121	LS	LS	A	X		N
	0	001			72868-0C040-B			COVER, CTR ARMREST H INGE, RH	形状変更/Shape Change	2007/01/26	HNH2-6109	LS	LS	A	X		N
	0	001			72869-0C020-B			COVER, CTR ARMREST H INGE, LH	形状変更/Shape Change	2007/01/26	HNH2-6109	LS	LS	A	X		N
383WPC0173	0	001			72995-0C050-A			COVER, RR SEAT CUSHION, RH	形状変更/Shape Change	2007/01/28	HNH2-6109	LS	LS	A	X		N
383WPC0173	X	001			72995-0C070-A			*	形状変更/Shape Change	2007/01/26	HNH2-6109	LS	LS	A	X		N
383WPC0173	X	001			72998-0C040-A			COVER, RR SEAT CUSHION, LH	形状変更/Shape Change	2007/01/26	HNH2-6109	LS	LS	A	X		N
383WPC0173	0	001			72998-0C060-A			*	形状変更/Shape Change	2007/01/26	HNH2-6109	LS	LS	A	X		N
	0	001			79023-0C060-A			COVER SUB-ASSY, NO.2 SEAT BACK, RH	形状変更/Shape Change	2007/01/28	HNH2-6109	LS	LS	A	X		N
	0	001			79023-0C070			*	形状変更/Shape Change	2007/01/26	HNH2-6109	LS	LS	A	X		N
	0	001			79023-0C080			*	形状変更/Shape Change	2007/01/26	HNH2-6109	LS	LS	A	X		N
	0	001			79024-0C060-A			COVER SUB-ASSY, NO.2 SEAT BACK, LH	形状変更/Shape Change	2007/01/26	HNH2-6109	LS	LS	A	X		N
	0	001			79024-0C070			*	形状変更/Shape Change	2007/01/26	HNH2-6109	LS	LS	A	X		N
	0	001			79024-0C080			*	形状変更/Shape Change	2007/01/26	HNH2-6109	LS	LS	A	X		N
383WPC0166	X	001			79100-0C010			SEAT ASSY, NO.1 RH	構成変更/COMPONENT PART CHANGE	2007/01/26	HNH2-6109	LS	LS	A	X		N
383WPC0166	X	001			79100-0C020			SEAT ASSY, NO.1	構成変更/COMPONENT PART CHANGE	2007/01/26	HNH2-6109	LS	LS	A	X		N

設變切替依賴書 / ECI No.3

HINO MOTORS, LTD.

開発管理部

K06508

Printed 2006/11/17
Time 11:10:25

383WPC0166

TRIMMASTERS, INC.
DEPARTMENT DATE:

APPROVED APPROVED

46 97

ORIGINAL

NOV 29 2006

383W 設變切替依賴書 ENGINEERING CHANGE INSTRUCTIONS										担当室 Eng. Design HNH22	電話 TEL 5381	作成 Prepared OHMORI	No. 383WP0406			Page 5
工 程 Routing (Process)	区分 Key	構成 昇	Group Code	旧品番 Previous Part No.	透折SI	挿納 Ser. Det.	品 名 Part Name	變更事項 Revision	後日出圖予定日 Later Dwg. Issues	Condition RDDP No.	出圖Dwg. 國內海外 Jpn. Eng.	五 月	新 NP	CAD 認C		
				新品番 New Part No.	個數Qt.	後日出圖予定日 Later Dwg. Issues			Condition RDDP No.	出圖Dwg. 國內海外 Jpn. Eng.	五 月	新 NP				
	001			79100-0C030	->A		SEAT ASSY, NO. 1	構成変更/COMPONENT PART CHANGE	2007/01/26	HNH2-6109	LS LS	A	X	N		
	001			79100-0C040	->A		SEAT ASSY, NO. 1 RH	構成変更/COMPONENT PART CHANGE	2007/01/28	HNH2-6109	LS LS	A	X	N		
383WPC0166 X	001			79100-0C050	->A		*	構成変更/COMPONENT PART CHANGE	2007/01/26	HNH2-6109	LS LS	A	X	N		
	001			79100-0C060	->A		*	構成変更/COMPONENT PART CHANGE	2007/01/26	HNH2-6109	LS LS	A	X	N		
	001			79100-0C070	->A		*	構成変更/COMPONENT PART CHANGE	2007/01/26	HNH2-6109	LS LS	A	X	N		
383WPC0166 X	001			79110-0C010	->A		SEAT ASSY, NO. 1 LH	構成変更/COMPONENT PART CHANGE	2007/01/26	HNH2-6109	LS LS	A	X	N		
	001			79110-0C020	->A		*	構成変更/COMPONENT PART CHANGE	2007/01/26	HNH2-6109	LS LS	A	X	N		
383WPC0166 X	001			79110-0C030	->A		*	構成変更/COMPONENT PART CHANGE	2007/01/26	HNH2-6109	LS LS	A	X	N		
	001			79110-0C040	->A		*	構成変更/COMPONENT PART CHANGE	2007/01/26	HNH2-6109	LS LS	A	X	N		
	001			79110-0C050	->A		*	構成変更/COMPONENT PART CHANGE	2007/01/26	HNH2-6109	LS LS	A	X	N		
	001			79200-0C060	->A		SEAT ASSY, NO. 2 RH	構成変更/COMPONENT PART CHANGE	2007/01/26	HNH2-6109	LS LS	A	X	N		
	001			79200-0C070	->A		*	構成変更/COMPONENT PART CHANGE	2007/01/26	HNH2-6109	LS LS	A	X	N		
	001			79200-0C080	->A		*	構成変更/COMPONENT PART CHANGE	2007/01/26	HNH2-6109	LS LS	A	X	N		
	001			79210-0C060	->A		SEAT ASSY, NO. 2 LH	構成変更/COMPONENT PART CHANGE	2007/01/26	HNH2-6109	LS LS	A	X	N		
	001			79210-0C070	->A		*	構成変更/COMPONENT PART CHANGE	2007/01/26	HNH2-6109	LS LS	A	X	N		
	001			79210-0C080	->A		*	構成変更/COMPONENT PART CHANGE	2007/01/26	HNH2-6109	LS LS	A	X	N		
	001			87510-0C050-A	->B		HEATER ASSY, SEAT	形状変更/Shape Change	2007/01/26	HNH2-6109	LS LS	A	X	N		
	001			87510-0C060-A	->B		*	形状変更/Shape Change	2007/01/26	HNH2-6109	LS LS	A	X	N		
↓	001			87530-0C030-A	->B		HEATER ASSY, SEAT BA CK	形状変更/Shape Change	2007/01/26	HNH2-6109	LS LS	A	X	N		

設變切替依賴書 / ECI No. 3

HINO MOTORS, LTD.

開発管理部

H98509

Printed 2006/11/17
Time 11:18:25

383WP0406

HINO MOTORS, INC.
DATE OF DEPARTMENT DATE:

APPROVED	APPROVED	CHECKED	DATE
		58	11/17

ORIGINAL

NOV 29 2006

ENGINEERING CHANGE INSTRUCTIONS

383w 設變切替依頼書

ECI No. 383WP0406

Page [[5/26] /]

Change portion/Remarks (和英併記)

2nd

[SEAT ASSY]

(LTD) SEAT ASSY, NO.1 LH
(4:2:4) 79100-0C040 → A.

SEAT ASSY, NO.1
79100-0C030 → A.

SEAT ASSY, NO.1 RH
79110-0C020 → A.

(FAB) 79100-0C010 → A.
(4:2:4)

79100-0C020 → A.

79110-0C010 → A.

(LTR) 79100-0C070 → A.
(4:0:4)

79110-0C050 → A.

(LTR) 79100-0C060 → A.
(4:L:4)

79110-0C040 → A.

(FAB) 79100-0C050 → A.
(4:L:4)

79110-0C030 → A.

2nd 20%

[BACK PAD] DRAWING MODIFICATION.

Change how to measure the hardness.

71667-0C010-B → C

PAD, RR SEAT BACK, CTR

71667-0C020-A → B

PAD, RR SEAT BACK, CTR

383WP0406
 HINO MOTORS, INC.
 APPROVED []
 5F 9A

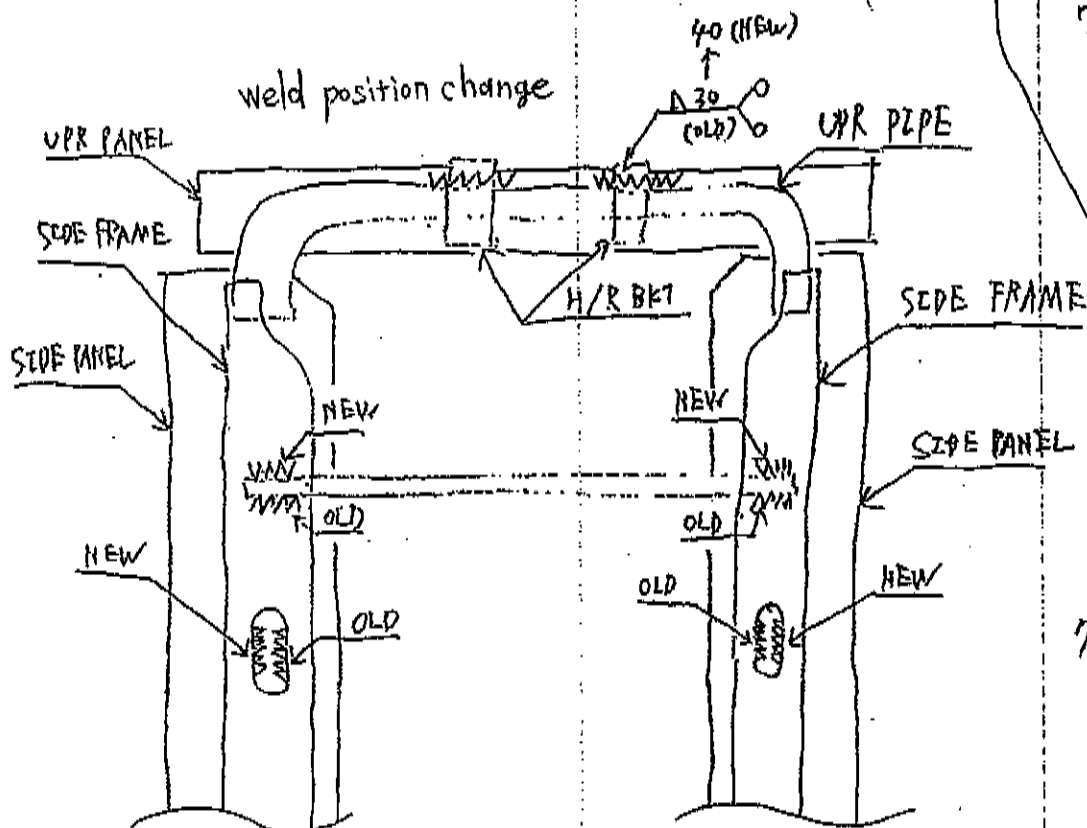
ORIGINAL

NOV 29 2006

Change portion/Remarks (和英併記)

2ND 40%

[BACK FRAME ~]



FRAME SUB-ASSY, RR SEAT BACK, RH

71017-0C080 G → H. ... (+12:4)

71017-0C100 G → H. ... (+1/2 A/R)

FRAME SUB-ASSY, RR SEAT BACK, LH

71018-0C060 G → H. ... (+12:4)

71018-0C080 G → H. ... (+1/2 A/R)

FRAME SUB-ASSY, RR SEAT BACK, RH

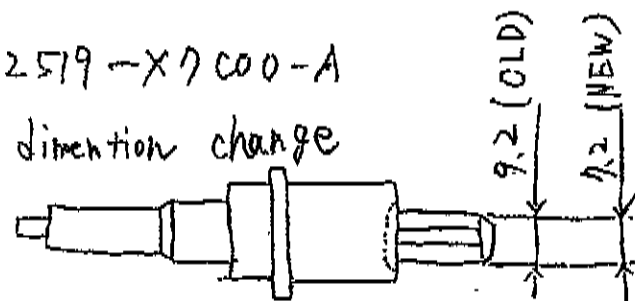
71017-0C090 G → H. ... (WITH 1/2)

FRAME SUB-ASSY, RR SEAT BACK, LH

71018-0C070 G → H. ... (WITH 1/2)

72519-X7000-A

dimension change



(TB ECI No. 383WAF0132)

APPROVE [Signature] DATE: 3/24/2006

5F 47

ENGINEERING CHANGE INSTRUCTIONS

383W 設変切替依頼書

ECI No. 383WP0406

Page [[8/26] /]

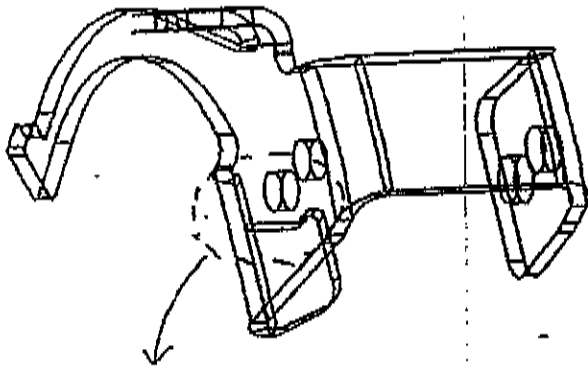
Change portion/Remarks (和英併記)

2ND 40%

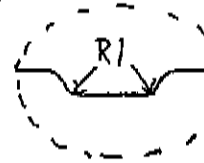
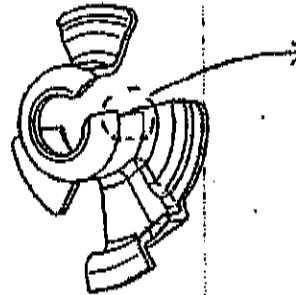
[BACK FRAME ~ 2]

2ND 40% ADJUSTER ASSY

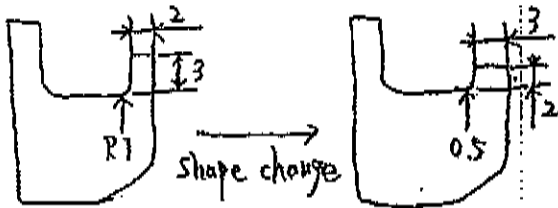
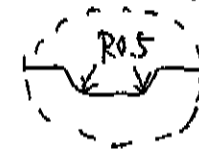
79172-X7C00-F



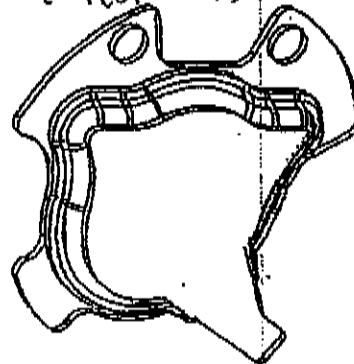
72757-X7C02-C



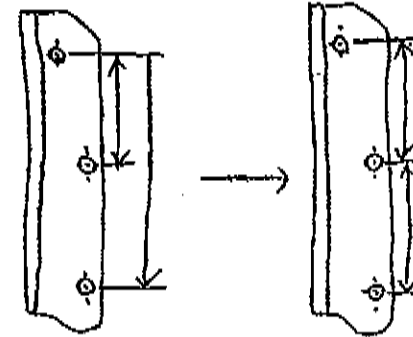
↓ shape change



81559-X7C03-F
Correction of title block



71295-X7C00-D
Correction of dimension



(TB ECI No. 383WAF 0132)

Approval stamp area with handwritten signature '68 97' and a date stamp.

ORIGINAL

NOV 29 2006

Change portion/Remarks (加減修記)

2ND 20%

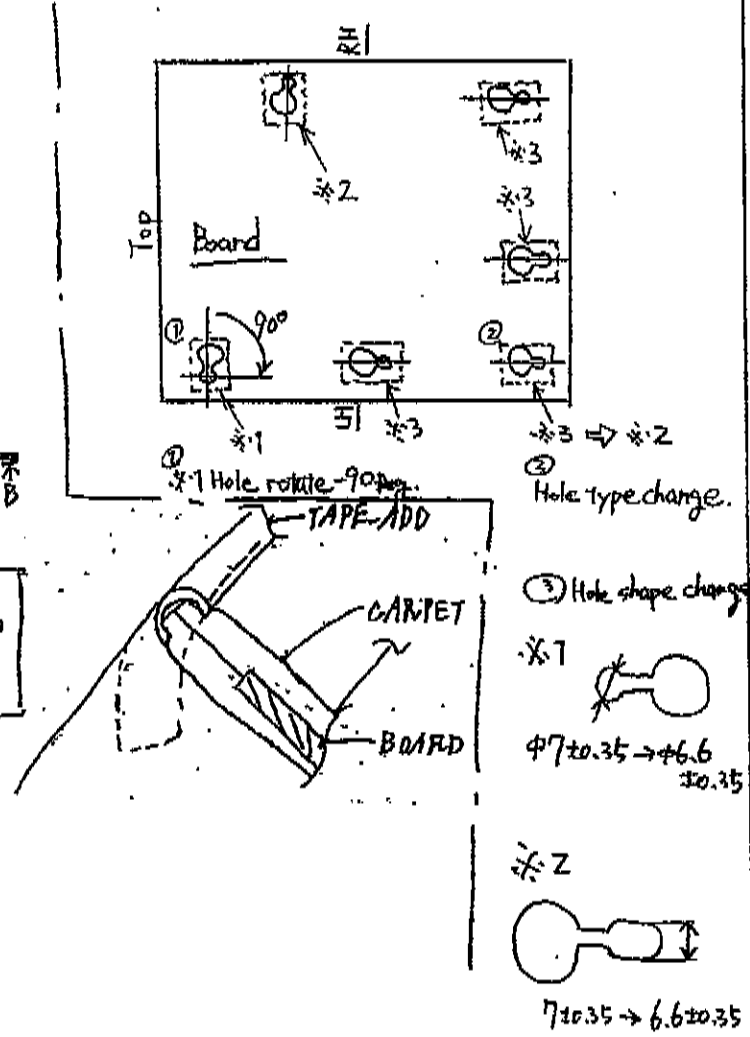
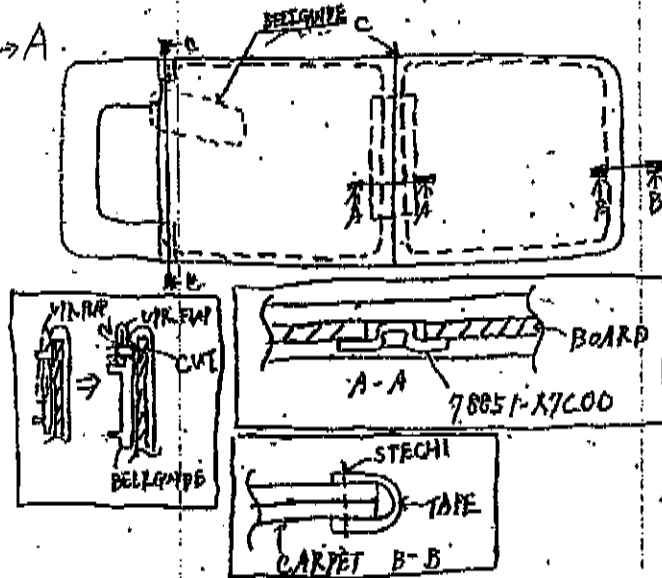
[BACK BOARD ~ 1]

BOARD SUB-ASSY, RR SEAT BACK.

(20%) 71087-0C010 → A

(1/2-PATA 20%) 71087-0C020 → A.

Shape change



(TB ECI No. 383WAF0115)

APPROVED	CHECKED	DESIGNED	INDICATED

58 44

ORIGINAL

NOV 29 2006

Change portion/Remarks (加減修)

2ND 40%

[BACK BOARD ~ 2]

BOARD SUB-ASSY, RR SEAT BACK

(40% RH) 71701-0C020 → A.

(CAP RH) " - 0C030 → A.

(40% LH) 71702-0C010 → A.

(CAP LH) " - 0C020 → A.

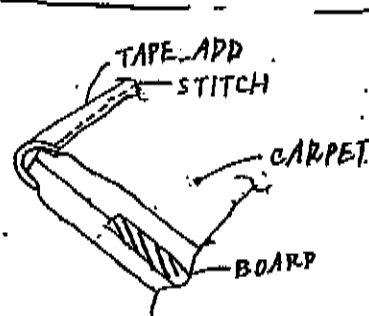
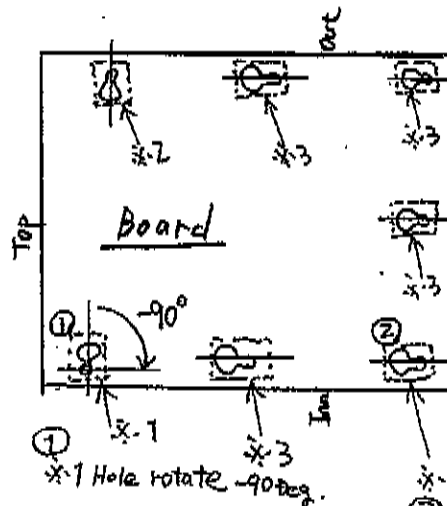
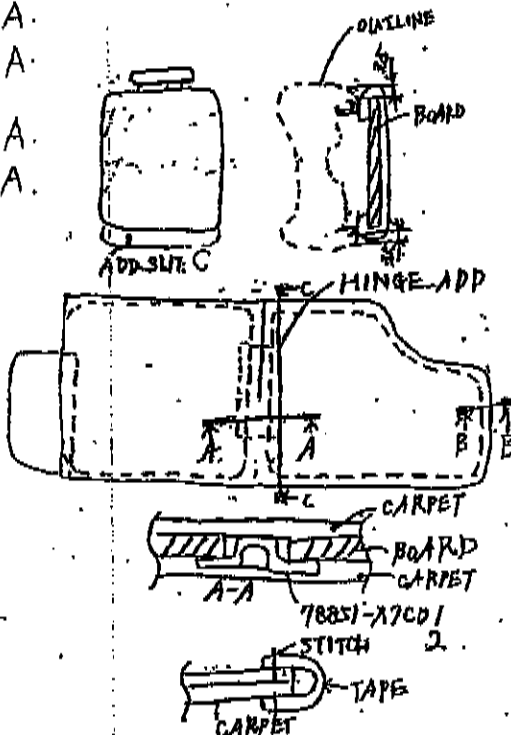
(w/o-PATA 40% RH) 71701-0C050 → A.

(w/o-PATA CAP RH) 71701-0C060 → A.

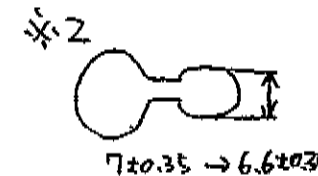
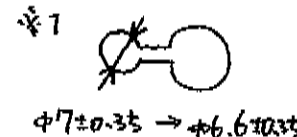
(w/o-PATA 40% LH) 71702-0C050 → A.

(w/o-PATA CAP LH) 71702-0C060 → A.

shape change



③ Hole shape change



(TB ECI No. 383WAF 0115)

383WP0406

APPROVED	APPROVED	CHECKED	DATE
		SF	

Change portion/Remarks (和英併記)

2ND RH. LH. CTR

{ 2nd, SHIELD SHAPE CHANGE }

REC COVER RH

{ COVER, RR SEAT RECLINING, INNER RH
71878-0C030-A → B
71878-0C060-A → B

REC COVER LH

{ COVER, RR SEAT RECLINING, INNER LH
71879-0C040-A → B
71879-0C050-A → B

CTR SEAT

{ COVER, CTR SEAT HINGE, UPR RH
71397-0C020-B → C
COVER, CTR SEAT HINGE, UPR LH
71398-0C020-B → C

(TB ECI No. 383WAF0130)

HINO MASTERS, INC.			
383WP0406 DEPARTMENT DATE:			
APPROVED	APPROVED	CHECKED	ORIGINAL
		58	47

ORIGINAL

NOV 29 2005

ENGINEERING CHANGE INSTRUCTIONS

383w 設變切替依頼書

ECI No. 383WP0406

Page [13/26] / []

Change portion/Remarks (加減詳記)

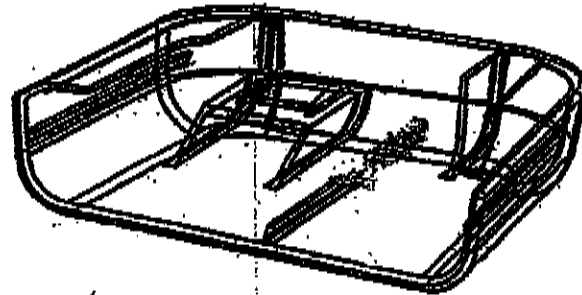
2ND 20% {A/R HINGE COVER}

COVER, CTR ARMREST HINGE, RH

72868-0C040 B → C

COVER, CTR ARMREST HINGE, LH

72869-0C020 B → C



<Shape Change>

- Add insert support (Plastic TIP)
- Add attach plate
- Cut flange and rib

TIB ECI No. 383WAF0140

383WAF0140 INC.

DESIGN DEPARTMENT DATE:

APPROVED	APPROVED	CHECKED	ORIGINATED
		4/	4/

Change portion/Remarks (加減記)

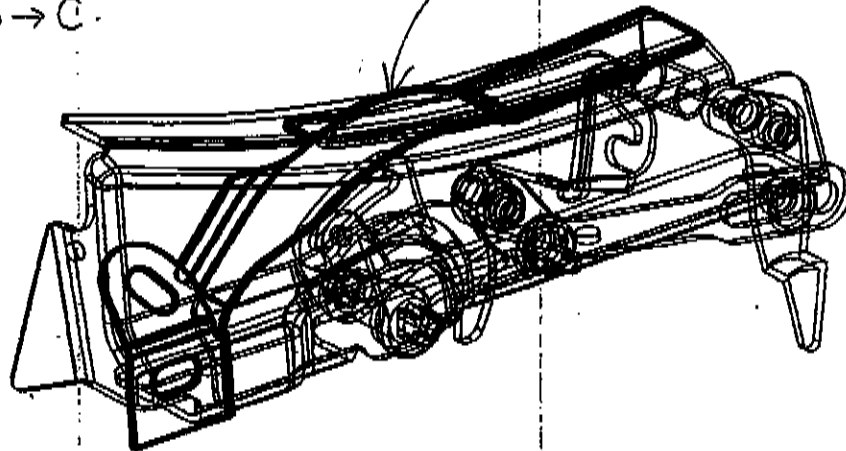
2WD 40%

{ SEAT ADJ ~ 1 }

(R) Hook Sub-assy, Reclining Connecting
72309-0C010B → C.

(L) Hook Sub-assy, Reclining Connecting
72309-0C020B → C.

Add mechanical cover



383WP0406		HINO MOTOR, INC.	
APPROVED		DATE	
ORIGINATED		DATE	
		4	17

ENGINEERING CHANGE INSTRUCTIONS

383w 設変切替依頼書

ECI No. 383WP0406

Page [[15/26] /]

Change portion/Remarks (和英併記)

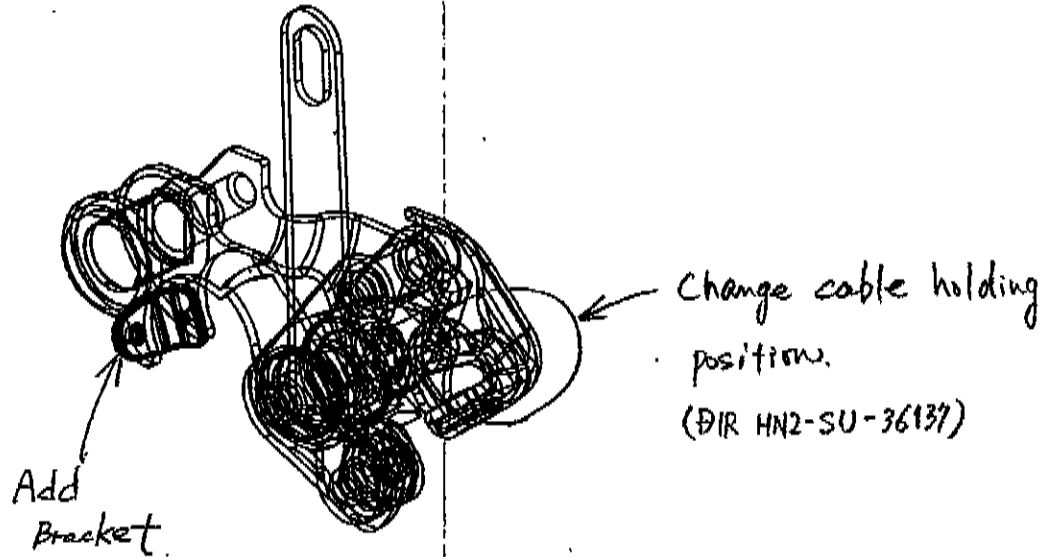
2ND 40% [SEAT ADJ ~ 2]

2ND 40% SEAT

LEVER SUB-ASSY, RR BACK LOCK CONTROL

(RH) 72067-0C010 A → B.

(LH) 72068-0C010 A → B.



383WP0406 TRIM MASTERS, INC. DEPARTMENT DATE:

HINO MOTORS, LTD

Handwritten initials/signature

ORIGINAL

NOV 29 2005

Change portion/Remarks (和英併記)

ZND 20%. 40%

{ TRACK ASSY }

TRACK ASSY, RR NO.1 SEAT

(40% CTR R) 72160-0C021 → A.

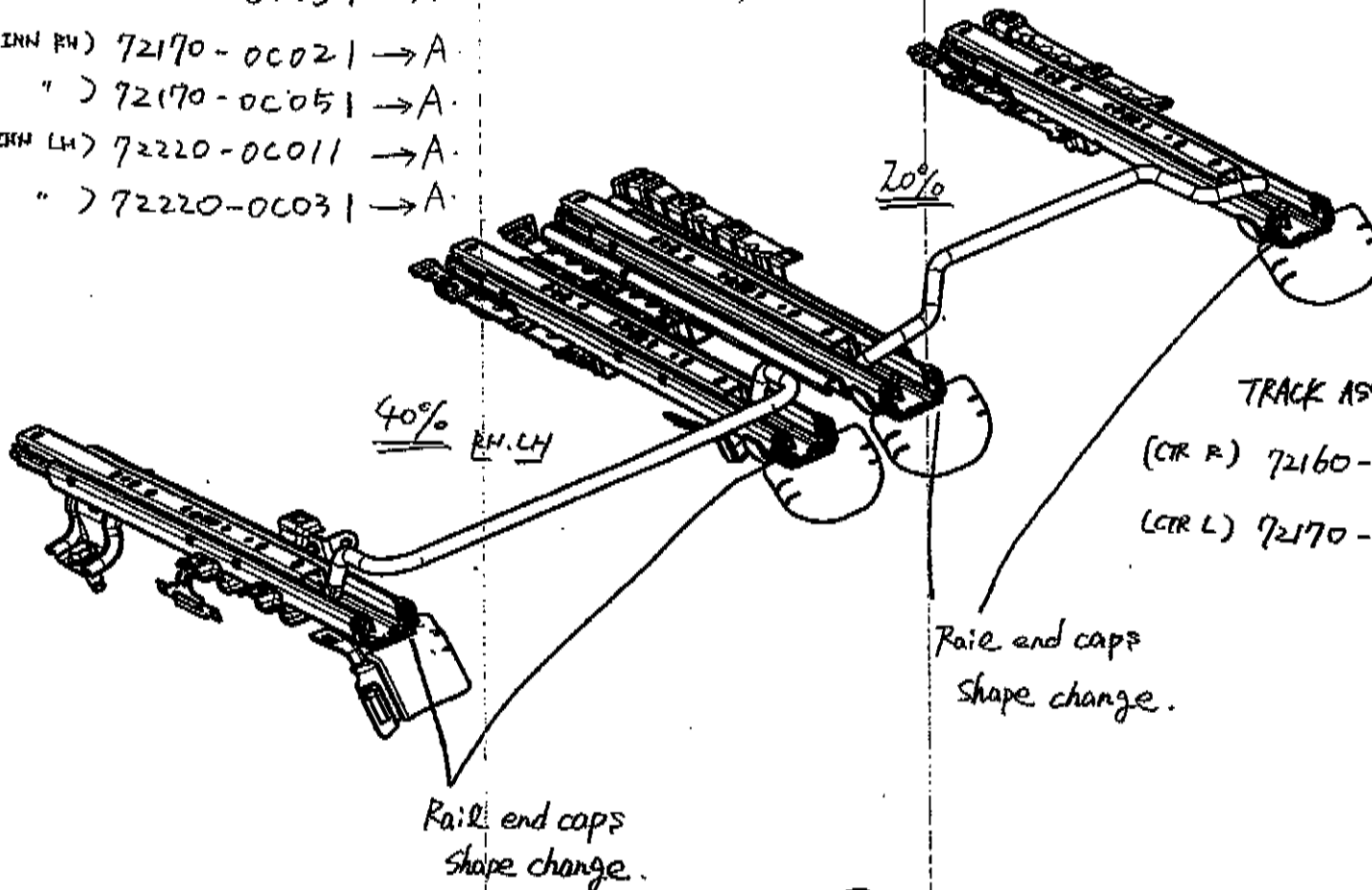
(" LH) 72210-0C051 → A.

(42% INN RH) 72170-0C021 → A.

(41% ") 72170-0C051 → A.

(42% INN LH) 72220-0C011 → A.

(41% ") 72220-0C031 → A.



TRACK ASSY, RR NO.7 SEAT

(CTR R) 72160-0C031 → A.

(CTR L) 72170-0C031 → A.

Rail end caps
shape change.

APPROVED	APPROVED	CHECKED	ORIGINATED
		48	47

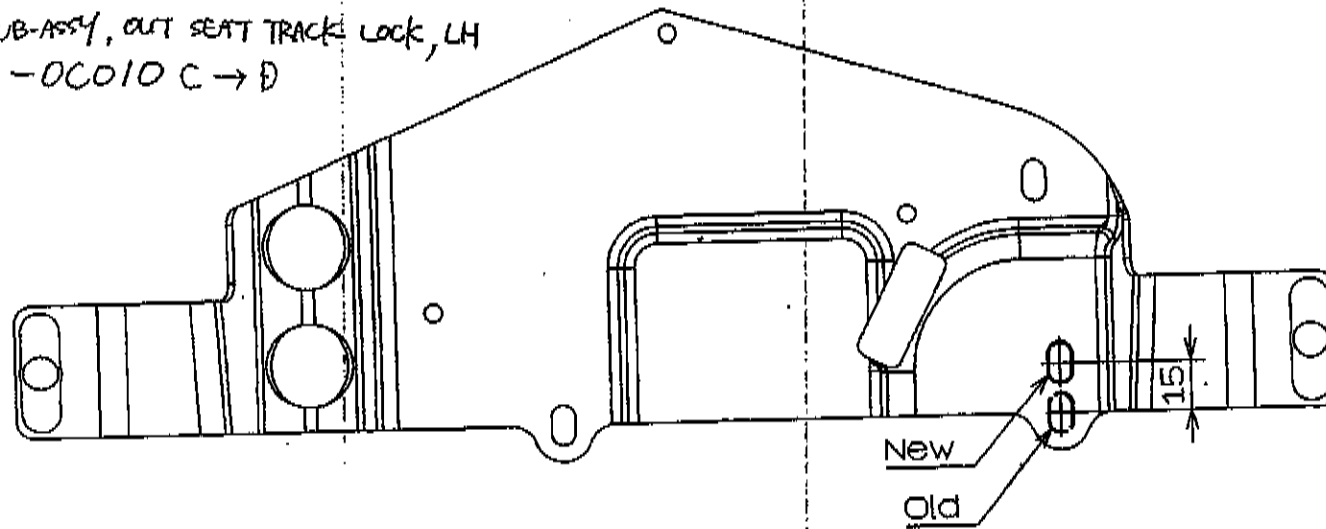
Change portion/Remarks (和英併記)

2ND 40%

[CUSHION]

PLATE SUB-ASSY, SEAT TRACK STOP
(RH) 72207-0C010 C → D

PLATE SUB-ASSY, OUT SEAT TRACK LOCK, LH
(LH) 72208-0C010 C → D



* Remove Hole

72208-0C010

APPROVED	APPROVED	CHECKED	ORIGINATOR
		4	47

ORIGINAL

NOV 29 2005

ENGINEERING CHANGE INSTRUCTIONS

383W 設変切替依頼書

ECI No. 383WP0406

Page [[18/26] /]

Change portion/Remarks (取替記)

2ND 40%

[CUSHION HTR]

HEATER ASSY, SEAT

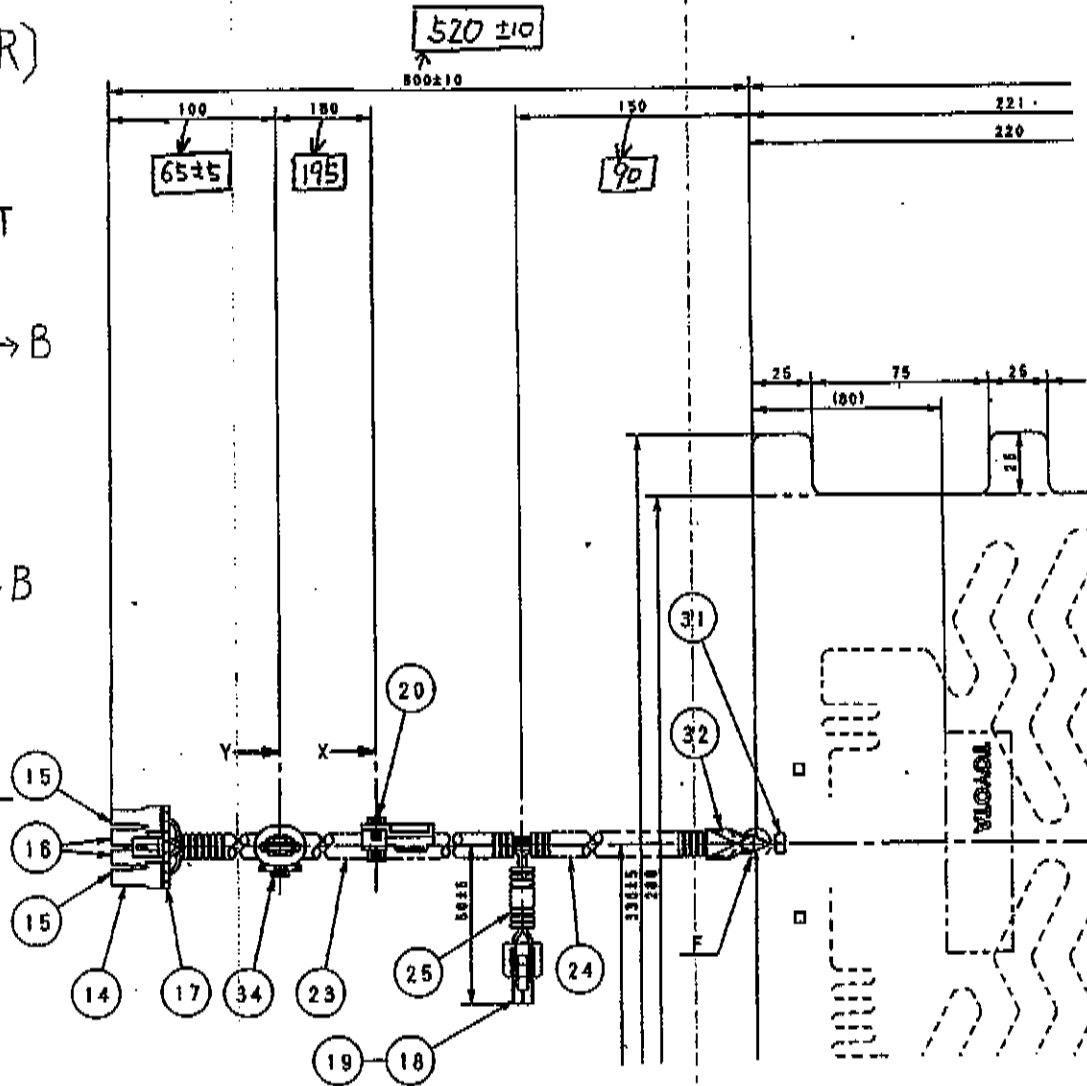
RH

87510-0C050 A→B

LH

87510-0C060 A→B

Length Change



383WP0406

TRIMMASTERS, INC.

APPROVED: [Signature] DATE: []

APPROVED	APPROVED	CHECKED	ORIGINATED
		54	97

Change portion/Remarks (和英併記)

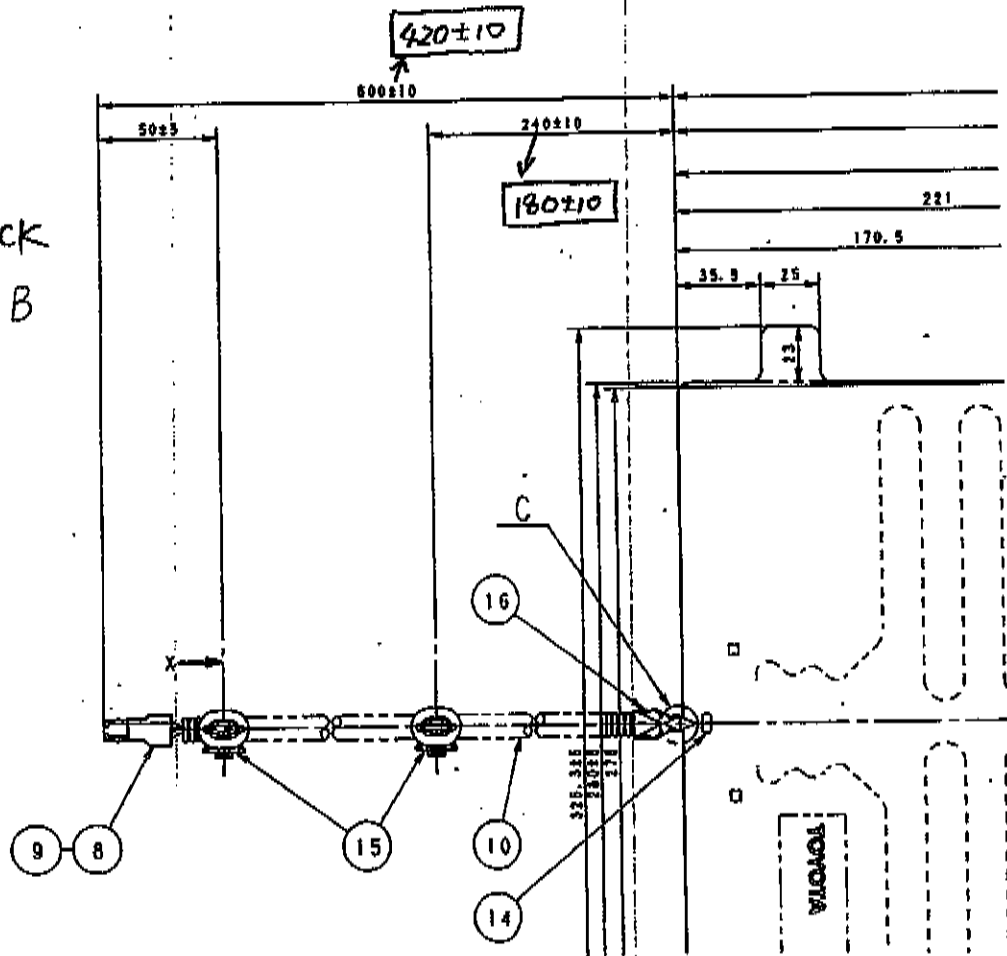
2ND 40%

[BACK HTR]

HEATER ASSY, SEAT BACK

087530-0C030 A → B

Length Change



383WP0406

HINO MOTORS, LTD. ENGINEERING DEPARTMENT DATE:

APPROVED	APPROVED	CHECKED	ORIGINATED
		38	47

ORIGINAL

NOV 29 2006

ENGINEERING CHANGE INSTRUCTIONS

383W. 設変切替依頼書

ECI No. 383WPD406

Page [20/26] / []

Change portion/Remarks (変更)

3rd [SEAT ASSY]

(PWR LTR) 40% 79200-0C060 → A
SEAT ASSY, NO.2 RH

[3RD, SIDE H/R KNOB]

(PWR LTR) 60% 79210-0C060 → A
SEAT ASSY; NO.2 LH

OLD) Headrest S/A Dwg. } different shape
Single item Dwg. }

(PWR PER) 40% 79200-0C070 → A
SEAT ASSY, NO.2 RH.

(* S/A Dwg. → O)
(Component Dwg. → X)

(PWR PER) 60% 79210-0C070 → A
SEAT ASSY, NO.2 LH

New) Headrest S/A } Same shape
Component Dwg. }

(MNL FAB) 40% 79200-0C080 → A
SEAT ASSY, NO.2 RH

* Component Dwg. → Shape change due to renewed.

(MNL FAB) 60% 79210-0C080 → A
SEAT ASSY, NO.2 LH

[3RD, SIDE H/R SHAFT]

Change of serration shape for wrong assembly prevention.
(PokaYoke)

[TB ECI NO. 383WAF.0130]

HINO MOTORS, LTD. MASTERING INC.

383WPD406

APPROVED DATE

APPROVED	APPROVED	CHECKED	ORIGINATED
			ht 97

ORIGINAL

NOV 29 2005

Change portion/Remarks (変更) 3rd 40% 60% 3rd 40% , 60%

H/R [H/R ASSY, PAD, COVER, BACK PAD, BACK COVER]
 PAD SUB-ASSY, NO.2 SEAT HEADREST

(MNL 40.60) 71097-0C040 → A.

HEADREST ASSY, NO.2 SEAT

(PWR 60) 71097-0C030 → A.

H/R pad (MNL 40.60) 71970-0C080 → A.

(PWR 40) 71097-0C050 → A.
 COVER, NO.2 SEAT HEADREST

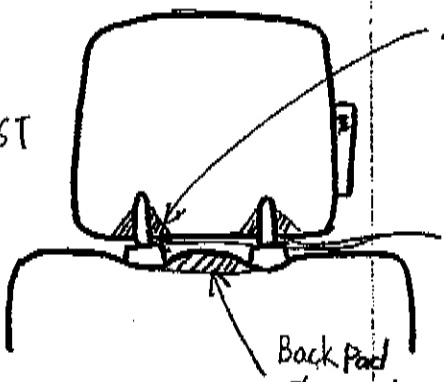
Shape change (PWR 60) 71970-0C090 → A.

Area Cut (PWR 40) 71970-0C110 → A.
 (4 portions)

(MNL 40.60) 71981-0C010 → A.

3rd Row H/R T/C shape change
 TB ECI No. 383WAF0142

(PWR 40.60) 71981-0C020 → A.
 SEAT BACK



Back Pad
 Shape Change

Pad, RR SEAT BACK
 (MNL 40) 71651-0C150A → B.

FAB (40%) 79023-0C060-A → B.
 COVER SUB-ASSY, NO.2 SEAT BACK, RH PERFOR

Area Cut. (MNL 60) 71652-0C100A → B * 1

LTR (40%) 79023-0C070 → A.

(60%) 79024-0C080 → A. (PWR 40) 71651-0C170A → B.

PERFOR (40%) 79023-0C080 → A.

(PWR 60) 71652-0C130A → B * 1

FAB (60%) 79024-0C060-A → B.

* DRAWING MODIFICATION

LTR (60%) 79024-0C070 → A.

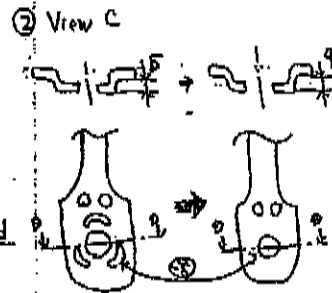
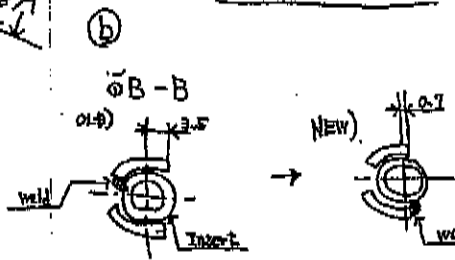
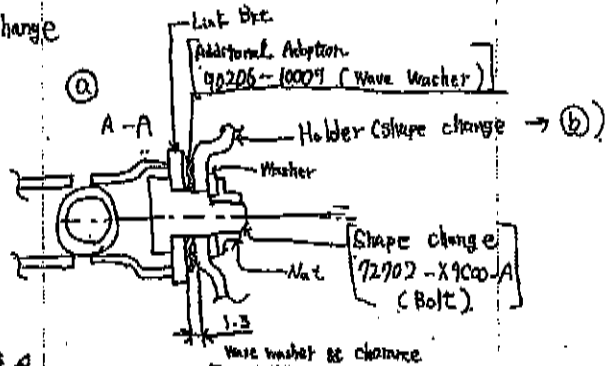
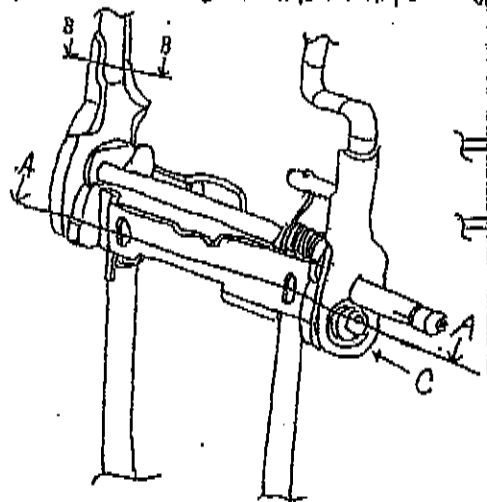
Change how to measure the hardness

TRIM MASTERS, INC.
 DEPARTMENT DATE:
 APPROVED: [Signature] CHECKED: [Signature] ORIGINATED: [Signature]

Change portion/Remarks (物実特記)

• 3R Φ (Side Headrest (MNL, PWR))

① Add wave washer ② Side holder, shape change



ADJUSTER SUB-ASSY, RR SEAT HEADREST

71907-0C010 B \rightarrow C. PWR 60%

71907-0C020 A \rightarrow B. MNL

71907-0C030 A \rightarrow B. PWR 40%

• Side H/R knob \rightarrow Material change

Knob, RR SEAT HEADREST

71988-0C010 \rightarrow A.

OLD)

TSM5515G-2 \Rightarrow TSM5516G-1

New

• Rerouter Fixing Clip ... Additional Adoption

PIECE, RR BUMPER

52161-0C020-A

(TB \rightarrow New adoption due to TMC part No.)

(TB ECI NO, 383WAF0128)

383WP0406

TRIM MASTERS, INC.
DEPARTMENT DATE:

APPROVED	APPROVED	CHECKED	ORIGINAL
		LF	TF

ORIGINAL

NOV 29 1985

ENGINEERING CHANGE INSTRUCTIONS

383W 設變切替依頼書

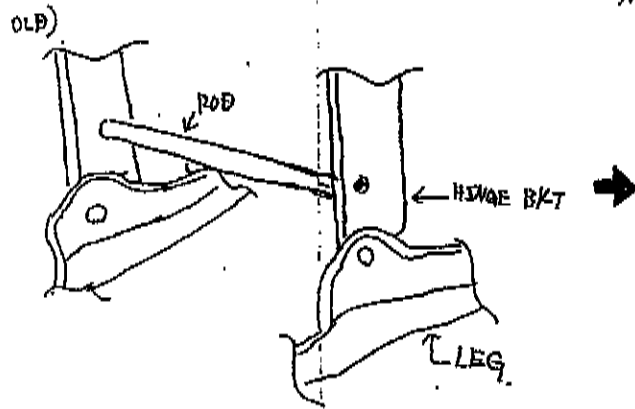
ECI No. 383WP0406

Page [24/26] / 1

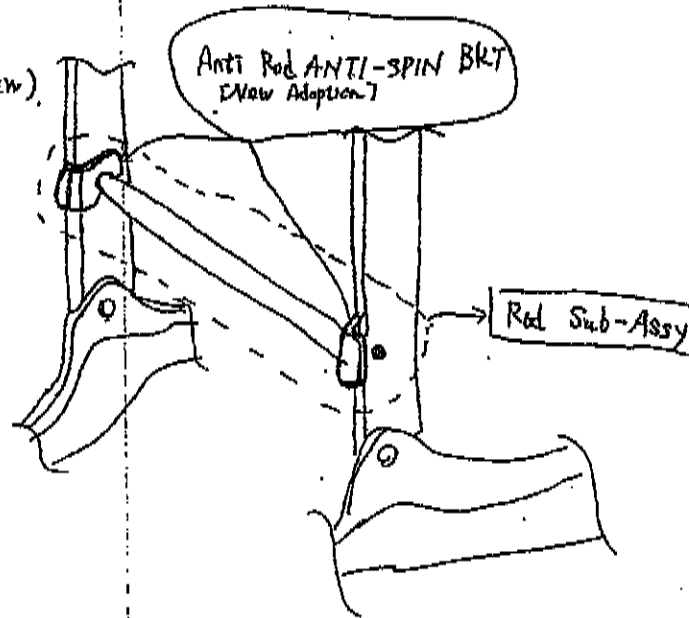
Change portion/Remarks (和英併記)

3rd 40% 60%
[ADJ ROD]

[3RD, LEG: ADD ANTI ROD ANTI-SPIN BKT]



NEW)



[TB ECI No. 383WAF0121]

ECI No. 4

HINO MOTORS, LTD

TRIM MASTERS, INC.

FORM HS4024-1 AL 34-44-1-0

383W/10203			
APPROVED DEPARTMENT DATE:			
APPROVED	APPROVED	CHECKED	ORIGINATED
		44	44

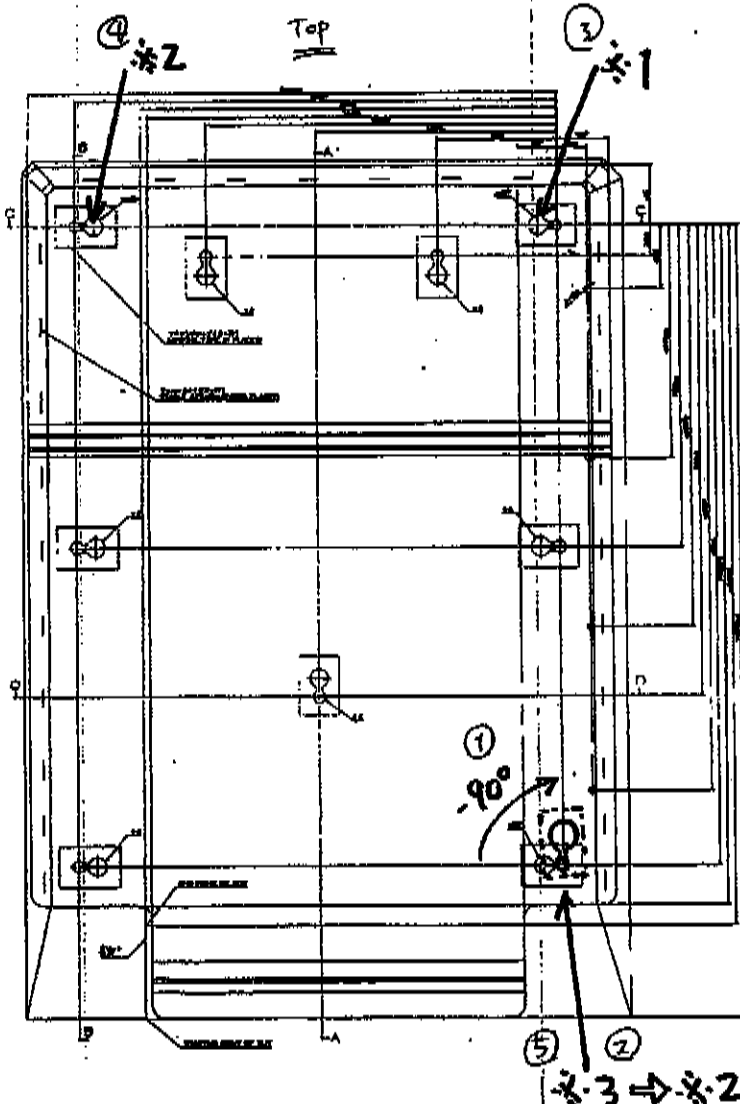
ORIGINAL

NOV 29 1988

Change portion/Remarks (組立書記)

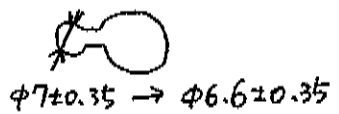
3rd 40%
[BOARD-]
BOARD SUB-ASSY,
RR SEAT BACK.

(MNL40)
71701-0C040 → A.
(MNL40)
71701-0C010-A → B

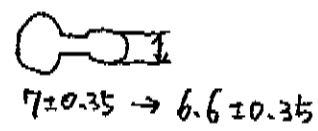


①.②
Hole type change *3 → *2,
And Hole rotate -90deg..

③
*1 Hole shape change.



④
*2 Hole shape change.



⑤ *3 Hole shape disuse.



383WP0406

APPROVED	APPROVED	ENGINEER
		SF JZ

NOV 29 2006

ORIGINAL

ENGINEERING CHANGE INSTRUCTIONS

383W 設變切替依頼書

ECI No. 383WPD406

Page [(26/26) / 1]

Change portion/Remarks (加減修)

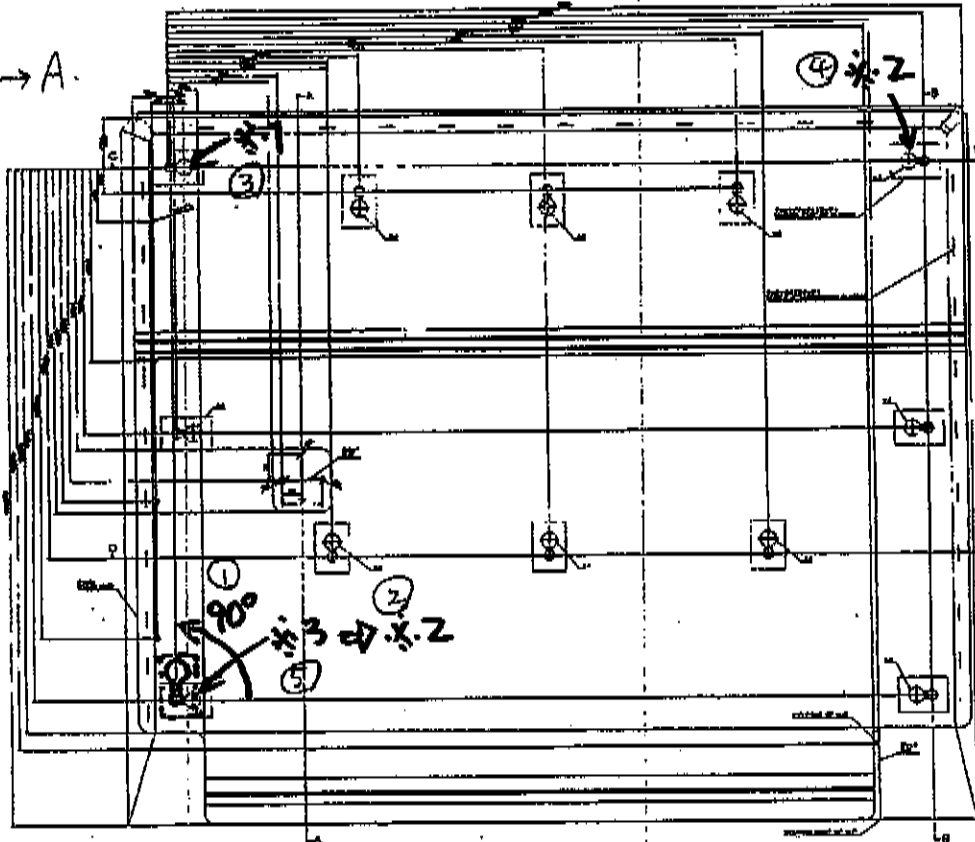
3rd 60%
[BOARD - 2]
BOARD SUB-ASSY,
RR SEAT BACK

(CWP60)


71702-0C040 → A.


(MNL60)


71702-0C030-A → B



①②
Hole type change $\#3 \rightarrow \#2$
And Hole rotate 90 deg.

③
 $\#1$ Hole shape change

 $\phi 7 \pm 0.35 \rightarrow \phi 6.6 \pm 0.35$

④
 $\#2$ Hole shape change

 $7 \pm 0.35 \rightarrow 6.6 \pm 0.35$

⑤
 $\#3$ Hole shape disuse.


SF 97

NOV 29

切替実施計画書		IMPLEMENTATION TIMING INSTRUCTION SHEET		ECI/RCI No. 383WP0406	Date 2006/12/05	Page (32 / 32)
PPM TOYOTA/DAIHATSU	Department TEMMA PROJECT PLANNING & MANAGEMENT	Approved	Checker Name	Staff DAVID GOLLER	Tel: 859-746-7940 Fax: 859-746-4371	

All parts implement for C/F&2 or JA except the following

Supplier = TMI
confirmed with Brian Ely about implementation timing

The following parts will partially implement for JA (Fully implement for 1A)
71701-0C020/80/50/60
71702-0C010/20/50/60

Not implementing for JA (implement for 1A)
71701-0C010/40
71702-0C030/40

Questionable for JA (Supplier to inform at later time)
87510-0C050/60
87530-0C030

Supplier = Aisin
confirmed with Jane Thomas about implementation timing

Not implementing for JA (implement for 1A)
72067-0C010
72068-0C010
72207-0C010
72208-0c010
72309-0C010
72309-0C020

383WP0203 12-06-06

APPROVED	APPROVED	CHECKED	ORIGINATED
		SF	JF

REQUEST FOR DESIGN & DEVELOPMENT OF PARTS
 外注品設計申入書

TO: **Trim Masters, Inc.**

RDDP NO. **HNH2 - 6109**
 MODEL **383W**
 ATTACHED SHEET **25** (Sheet)

PURCHASING COMPANY: **TEMA**

- SUPPLIER SELECTION PRODUCTION
 SE SERVICE
 PROTOTYPE

COMPANY NAME: **HINO MOTOR, LTD.**

DEPT NAME: **2nd Seat/Seat Belt Design Dept/Body Engineering Div.**

STAFF CODE: **HNH22**

APPROVED (C.R.) APPROVED CHECKED PREPARED

STAFF NAME: **T. Nakamura**

Phone No.: **042 - 586 - 5381**

Fax No.: **042 - 588 - 5113**

E-Mail: **tek.nakamura @ hino.co.jp** Date: **08/11/99** 08/11/99 H. Okamoto

TOYOTA PART NO.: **79100 - 0C010** → **A** RCI NO.: **383WP0405**

TOYOTA PART NAME: **SEAT ASSY, NO.1 LH**

TOYOTA PART NO. (OTHER)	<input type="checkbox"/> SEE ATTACHMENT	79100 - 0C030 - A	79100 - 0C040 - A
79100 - 0C020 - A	<input type="checkbox"/>	79100 - 0C050 - A	79100 - 0C070 - A
79100 - 0C050 - A	<input type="checkbox"/>	79110 - 0C020 - A	79110 - 0C030 - A
79110 - 0C010 - A	<input type="checkbox"/>	79110 - 0C050 - A	71657 - 0C010 - C
79110 - 0C040 - A	<input type="checkbox"/>	71017 - 0C080 - H	71017 - 0C090 - H

DESIGN & DEVELOPMENT:

- NEW DESIGN MODIFICATION → REFER TO THE EXISTING NO.:

PART DEVELOPMENT RESPONSIBILITY: ATTACHED SEPARATELY

PART DEVELOPMENT SCHEDULE: ATTACHED SEPARATELY

REFERENCE CAD DATA: RELEASED NOT RELEASED

PURPOSE:

Request For shape change.

BASIC REQUIREMENTS / SPECIFICATIONS SEE ATTACHMENT

71017-0C010-H,71018-0C080-H,71018-0C070-H,71018-0C080-H,71087-0C010-A,71087-0C020-A,71701-0C020-A
 71701-0C030-A,71701-0C050-A,71701-0C060-A,71702-0C010-A,71702-0C020-A,71702-0C080-A,71702-0C080-A
 71878-0C080-B,71878-0C060-B,71879-0C040-B,71879-0C050-B,71887-0C020-C,71888-0C020-C,72888-0C040-C
 72889-0C020-C,81518-0C050-B,81518-0C060-B,81530-0C030-B,78200-0C060-A,78200-0C070-A,78200-0C080-A
 78210-0C080-A,78210-0C070-A,78210-0C080-A,71651-0C180-B,71651-0C170-B,71652-0C100-B,71652-0C130-B
 78203-0C080-B,78203-0C070-A,78203-0C080-A,78204-0C080-B,78204-0C070-A,78204-0C080-A,71970-0C080-A
 71970-0C080-A,71970-0C110-A,71097-0C030-A,71097-0C040-A,71097-0C050-A,71881-0C010-A,71985-0C020-A
 71907-0C010-C,71907-0C020-B,71907-0C030-B,71988-0C010-A,52161-0C020-A,72885-0C050-B,72885-0C070-B
 72888-0C040-B,72888-0C080-B,71701-0C010-A,71702-0C030-B,71702-0C040-A

Structure:

Refer to the attached sheet

Required performance/Test & Evaluation:

same as before

Supplier drawings for approval:

Refer to the attached sheet

The following note addition:
 THIS PART SHALL CONFORM TO SUB-PARAGRAPH "SUBSTANCE PROHIBITION AND RESTRICTION" IN TSM201G.

<OTHER REQUIREMENTS>

TARGET COST	<input type="checkbox"/> + <input type="checkbox"/> -	VEHICLE REFERENCE PART NO.	-
TARGET MASS	<input type="checkbox"/> + <input type="checkbox"/> -	PIECE REFERENCE PART NO.	-
APPROVAL DRAWING	<input checked="" type="checkbox"/> REQUIRED	DUE DATE (RECEIPT AT ENGINEER)	07 / 1 / 15
	<input type="checkbox"/> NOT REQUIRED	(Supplier selection, Stg. prototype only)	Agreed with _____ on _____
REFERENCE CAD DATA		DUE DATE (RECEIPT AT ENGINEER):	/ /
<input type="checkbox"/> REQUIRED	DATA TYPE: <input type="checkbox"/> 3D SOLID <input type="checkbox"/> 3D SURFACE <input type="checkbox"/> OTHER		/
<input type="checkbox"/> NOT REQUIRED	DATA FORMAT: <input type="checkbox"/> CATIA V4 <input type="checkbox"/> PRO-E <input type="checkbox"/> OTHER		/
<input type="checkbox"/> FAILURE ANALYSIS		DUE DATE (RECEIPT AT ENGINEER)	/ /
<input type="checkbox"/> DBRM	<input type="checkbox"/> FTA <input type="checkbox"/> OTHER		/

Distribution	
Total	0

383WP0405
 TRIM MASTERS, INC.
 APPROVED _____
 CHECKED _____
 DATE _____

NOV 29 2000

ORIGINAL

HINO MOTORS, LTD.
 日産自動車

DESIGN PLANNING SHEET

設計計画書

TO: **Trim Masters, Inc.**

PURCHASING COMPANY: **TEMA**

<input type="checkbox"/> SUPPLIER SELECTION	<input checked="" type="checkbox"/> PRODUCTION
<input type="checkbox"/> SE	<input type="checkbox"/> SERVICE
<input type="checkbox"/> PROTOTYPE	<input type="checkbox"/>

SUPPLIER NAME:

Supplier Dept Name:

Phone No.:

Fax No.:

E-Mail:

Date:

SIGNATURE
NAME IN TTTS

TOYOTA PART NO.: **79100 - 0C010** **→ A** BCI NO.: **383WP0406**

TOYOTA PART NAME: **SEAT ASSY, NO.1 LH**

TOYOTA PART NO. (OTHER)	<input type="checkbox"/> SEE ATTACHMENT	79100 - 0C030 - A	79100 - 0C040 - A
79100 - 0C020 - A		79100 - 0C060 - A	79100 - 0C070 - A
79100 - 0C050 - A		79110 - 0C020 - A	79110 - 0C030 - A
79110 - 0C010 - A		79110 - 0C050 - A	71667 - 0C010 - C
79110 - 0C040 - A		71017 - 0C080 - H	71017 - 0C090 - H

DESIGN & DEVELOPMENT:

NEW DESIGN MODIFICATION—REFER TO THE EXISTING NO.:

PART DEVELOPMENT RESPONSIBILITY: ATTACHED SEPARATELY

PART DEVELOPMENT SCHEDULE: ATTACHED SEPARATELY

REFERENCE CAD DATA: RELEASED NOT RELEASED

SUPPLIER COMMENTS

71017-0C010-A,71018-0C060-A,71018-0C070-H,71018-0C080-H,71087-0C010-A,71087-0C020-A,71701-0C020-A
 71701-0C030-A,71701-0C050-A,71701-0C060-A,71702-0C010-A,71702-0C020-A,71702-0C050-A,71702-0C060-A
 71878-0C030-B,71878-0C060-B,71878-0C040-E,71878-0C060-E,71887-0C020-Q,71888-0C020-Q,72868-0C040-Q
 72868-0C020-Q,87510-0C050-B,87510-0C060-B,87530-0C030-B,78200-0C060-A,78200-0C070-A,78200-0C080-A
 79210-0C060-A,79210-0C070-A,79210-0C080-A,71851-0C180-B,71651-0C170-E,71652-0C100-B,71852-0C130-B
 79023-0C080-B,79023-0C070-A,79023-0C080-A,79024-0C030-B,79024-0C070-A,79024-0C080-A,71870-0C080-A
 71870-0C090-A,71870-0C110-A,71087-0C030-A,71087-0C040-A,71087-0C050-A,71981-0C010-A,71981-0C020-A
 71807-0C010-Q,71807-0C020-B,71907-0C030-B,71888-0C015-A,52181-0C020-A,72995-0C060-B,72988-0C070-B
 72988-0C040-B,72988-0C060-B,71701-0C018-B,71701-0C040-A,71702-0C030-B,71702-0C040-A

Structure:
 Refer to the attached sheet.
 Required performance/Test & Evaluation:
 same as before.
 Supplier drawings for approval:
 Refer to the attached sheet.

APPROVED	CHECKED	
5/3	5/3	5/3
TRIM MASTERS, INC.		
DATE OF DEPARTMENT DATE		

<OTHER CONFIRMATION>

TARGET COST: <input type="checkbox"/> + <input type="checkbox"/> -	VEHICLE	REFERENCE PART NO.
TARGET MASS: <input type="checkbox"/> + <input type="checkbox"/> -	PIECE	REFERENCE PART NO.
APPROVAL DRAWING <input checked="" type="checkbox"/> REQUIRED		ISSUE PLAN DATE (RECEIPT AT ENGINEER)
<input type="checkbox"/> NOT REQUIRED (supplier selection, SE, prototype only)		07 / 1 / 15
REFERENCE CAD DATA	ISSUE PLAN DATE (RECEIPT AT ENGINEER)	/ /
<input type="checkbox"/> REQUIRED	DATA TYPE: <input type="checkbox"/> 3D SOLID <input type="checkbox"/> 3D SURFACE <input type="checkbox"/> OTHER (/ /
<input type="checkbox"/> NOT REQUIRED	DATA FORMAT: <input type="checkbox"/> CATIA-V6 <input type="checkbox"/> PRO-E <input type="checkbox"/> OTHER (/ /
<input type="checkbox"/> FAILURE ANALYSIS	PLAN DATE (RECEIPT AT ENGINEER)	/ /
<input type="checkbox"/> DREFM <input type="checkbox"/> FTA <input type="checkbox"/> OTHER		

NOV 2 9 2008

ORIGINAL

HIND MOTORS, LTD
 品質管理部

383W REQUIRED DRAWING LIST FOR PARTS

<END SEAT 1/3 page>

PARTS NO.(NEW)	LEVEL	PART NO.(OLD)	PARTS NAME	QTY	RESPONSIBILITY	
					TMT	ASRN
79100-0G030	A	79100-200LM	SEAT ASSY. NO.1	1	◆	◆
79100-0G040	A	79100-200LP	SEAT ASSY. NO.1 RH	1	◆	◆
79110-0G020	A	79110-200LM	SEAT ASSY. NO.1 LH	1	◆	◆
79100-0G010	A	79100-200LL	SEAT ASSY. NO.1 RH	1	◆	◆
79100-0G020	A	79100-200LM	SEAT ASSY. NO.1	1	◆	◆
79110-0G010	A	79110-200LL	SEAT ASSY. NO.1 LH	1	◆	◆
79100-0G070	A	79100-200LS	SEAT ASSY. NO.1 RH	1	◆	◆
79110-0G050	A	79110-200LQ	SEAT ASSY. NO.1 LH	1	◆	◆
79100-0G060	A	79100-200LR	SEAT ASSY. NO.1 RH	1	◆	◆
79100-0G050	A	79110-200LP	SEAT ASSY. NO.1 LH	1	◆	◆
79100-0G030	A	79100-200LO	SEAT ASSY. NO.1 RH	1	◆	◆
79130-0G030	A	79110-200LM	SEAT ASSY. NO.1 LH	1	◆	◆
71650-0G020	F	71650-200LL	SPRING ASSY. RR SEAT CUSHION, RH	1	◆	◆
71660-0G020	F		SPRING ASSY. RR SEAT CUSHION, LH	1	◆	◆
71650-0G030	B		SPRING ASSY. RR SEAT CUSHION	1	◆	◆
71611-0G080	A	71611-200LL	PAD, RR SEAT CUSHION, RH	1	◆	◆
71611-0G100	A	71611-200LM	PAD, RR SEAT CUSHION, RH	1	◆	◆
71611-0G110	A		PAD, RR SEAT CUSHION, RH	1	◆	◆
71612-0G120	A	71612-200LL	PAD, RR SEAT CUSHION, LH	1	◆	◆
71612-0G100	A	71612-200LM	PAD, RR SEAT CUSHION, LH	1	◆	◆
71612-0G110			PAD, RR SEAT CUSHION, LH	1	◆	◆
71612-0Q120	A	71614-200LL	PAD, RR SEAT CUSHION, CTR	1	◆	◆
71614-0G010			PAD, RR SEAT CUSHION, CTR	1	◆	◆
71614-0G020			PAD, RR SEAT CUSHION, CTR	1	◆	◆
71075-0G020		71075-200LL	COVER SUB-ASSY. RR SEAT CUSHION, RH	1	◆	◆
71075-0G330		71075-200LM	COVER SUB-ASSY. RR SEAT CUSHION, RH	1	◆	◆
71075-0G340		71075-200LN	COVER SUB-ASSY. RR SEAT CUSHION, RH	1	◆	◆
71075-0G350		71075-200LP	COVER SUB-ASSY. RR SEAT CUSHION, RH	1	◆	◆
71075-0G360		71075-200LQ	COVER SUB-ASSY. RR SEAT CUSHION, RH	1	◆	◆
87510-0G060	A	87510-200LL	HEATER ASSY. SEAT	1	◆	◆
87510-0G080	A		HEATER ASSY. SEAT	1	◆	◆
71076-0G320		71076-200LL	COVER SUB-ASSY. RR SEAT CUSHION, LH	1	◆	◆
71076-0G330		71076-200LM	COVER SUB-ASSY. RR SEAT CUSHION, LH	1	◆	◆
71076-0G340		71076-200LN	COVER SUB-ASSY. RR SEAT CUSHION, LH	1	◆	◆
71076-0G350		71076-200LP	COVER SUB-ASSY. RR SEAT CUSHION, LH	1	◆	◆
71076-0G360		71076-200LQ	COVER SUB-ASSY. RR SEAT CUSHION, LH	1	◆	◆
71097-0G010		71097-200LL	COVER SUB-ASSY. CTR SEAT CUSHION	1	◆	◆
71097-0G020		71097-200LM	COVER SUB-ASSY. CTR SEAT CUSHION	1	◆	◆
71017-0G080	G	71017-200LL	FRAME SUB-ASSY. RR SEAT BACK, RH	1	◆	◆
71017-0G090	G	71017-200LM	FRAME SUB-ASSY. RR SEAT BACK, RH	1	◆	◆
71017-0G100	G	71017-200LN	FRAME SUB-ASSY. RR SEAT BACK, RH	1	◆	◆
71018-0G060	G	71018-200LL	FRAME SUB-ASSY. RR SEAT BACK, LH	1	◆	◆
71018-0G070	G	71018-200LM	FRAME SUB-ASSY. RR SEAT BACK, LH	1	◆	◆
71018-0G080	G	71018-200LN	FRAME SUB-ASSY. RR SEAT BACK, LH	1	◆	◆
71305-0G010	D	71305-200LL	FRAME SUB-ASSY. CTR SEAT BACK	1	◆	◆
71651-0G140	A	71651-200LL	PAD, RR SEAT BACK, RH	1	◆	◆
71651-0G180	A	71651-200LM	PAD, RR SEAT BACK, RH	1	◆	◆
71651-0G190	A	71651-200LN	PAD, RR SEAT BACK, RH	1	◆	◆
71651-0G090	A		PAD, RR SEAT BACK, RH	1	◆	◆
71652-0G090	A	71652-200LL	PAD, RR SEAT BACK, LH	1	◆	◆
71652-0G110	A	71652-200LM	PAD, RR SEAT BACK, LH	1	◆	◆
71652-0G120	A	71652-200LQ	PAD, RR SEAT BACK, LH	1	◆	◆
71652-0G140	A		PAD, RR SEAT BACK, LH	1	◆	◆
71652-0G150	A		PAD, RR SEAT BACK, LH	1	◆	◆
71667-0G010	B	71667-200LL	PAD, RR SEAT BACK, CTR	1	◆	◆
71667-0G020	A		PAD, RR SEAT BACK, CTR	1	◆	◆
71077-0G310		71077-200LL	COVER SUB-ASSY. RR SEAT BACK, RH	1	◆	◆
71077-0G320		71077-200LM	COVER SUB-ASSY. RR SEAT BACK, RH	1	◆	◆
71077-0G330		71077-200LN	COVER SUB-ASSY. RR SEAT BACK, RH	1	◆	◆
71077-0G340		71077-200LP	COVER SUB-ASSY. RR SEAT BACK, RH	1	◆	◆
71077-0G350		71077-200LQ	COVER SUB-ASSY. RR SEAT BACK, RH	1	◆	◆
87530-0G030	A		HEATER ASSY. SEAT BACK	1	◆	◆
71078-0G210	B	71078-200LL	COVER SUB-ASSY. RR SEAT BACK, LH	1	◆	◆
71078-0G220		71078-200LM	COVER SUB-ASSY. RR SEAT BACK, LH	1	◆	◆
71078-0G230		71078-200LN	COVER SUB-ASSY. RR SEAT BACK, LH	1	◆	◆
71078-0G240		71078-200LP	COVER SUB-ASSY. RR SEAT BACK, LH	1	◆	◆
71078-0G250		71078-200LQ	COVER SUB-ASSY. RR SEAT BACK, LH	1	◆	◆
71095-0G010		71095-200LL	COVER SUB-ASSY. CTR SEAT BACK	1	◆	◆
71095-0G020		71095-200LM	COVER SUB-ASSY. CTR SEAT BACK	1	◆	◆

TRIMMASTERS, INC.
DESIGN DEPARTMENT DATE: 383W/1164

APPROVED APPROVED CHECKED ORIGINALS

NOV 29 2006

ORIGINAL

383W REQUIRED DRAWING LIST FOR PARTS

RODP NO. HNH2-6109

第41(3/5)

<2ND SEAT 3/3 page>

PARTS NO.(NEW)	LEVEL		PART NO.(OLD)	PARTS NAME	QTY	RESPONSIBILITY	
	Prev.	New				TML	ASIN
72810-0C270			72810-2001L	ARMREST ASSY, SEAT, RH	1	◆	
72810-0C280			72810-2001M	ARMREST ASSY, SEAT, RH	1	◆	
72820-0C150			72820-2001L	ARMREST ASSY, SEAT, LH	1	◆	
72820-0C170			72820-2001M	ARMREST ASSY, SEAT, LH	1	◆	
72830-0C270		A	72830-2001L	ARMREST ASSY, RR SEAT, OTR	1	◆	
71330-0C010				HINGE ASSY, RR SEAT, RH	1	◆	
71340-0C010				HINGE ASSY, RR SEAT, LH	1	◆	
72868-0C040	B	C	72868-2001L	COVER, OTR ARMREST HINGE, RH	1	◆	
72869-0C020	B	C	72869-2001L	COVER, OTR ARMREST HINGE, LH	1	◆	
72830-0C280		A	72830-2001M	ARMREST ASSY, RR SEAT, OTR	1	◆	
71829-0C030			71829-2001L	COVER, RR SEAT CUSHION HINGE	1	◆	
71691-0C040			71691-2001M	COVER, RR SEAT CUSHION HINGE, NO.1	1	◆	
71691-0C050			71691-2001L	COVER, RR SEAT CUSHION HINGE, NO.1	1	◆	
71691-0C080				COVER, RR SEAT CUSHION HINGE, NO.1	1	◆	
71692-0C030			71692-2001M	COVER, RR SEAT CUSHION HINGE, NO.2	1	◆	
71692-0C060				COVER, RR SEAT CUSHION HINGE, NO.2	1	◆	
71834-0C040	B	C	71834-2001L	COVER, RR SEAT RECLINING, INNER RH	1	◆	
71878-0C030	A	B		COVER, RR SEAT RECLINING, INNER RH	1	◆	
71879-0C030	A	B		COVER, RR SEAT RECLINING, INNER LH	1	◆	
72693-0C010	A	B		PLATE, RR SEAT BACK LOOK LEVER	1	◆	
72735-0C010			72735-2001L	LEVER, RR SEAT RECLINING RELEASE, RH	1	◆	
72572-0C010	A	B		GAP RECLINING ADJUSTER KNOB	1	◆	
72827-0C040	A	B	72827-2001L	COVER, RR SEAT CUSHION UNDER, RH	1	◆	
71629-0C040				COVER, RR SEAT CUSHION HINGE	1	◆	
71691-0C070				COVER, RR SEAT CUSHION HINGE, NO.1	1	◆	
71843-0C030	B	C	71843-2001L	COVER, RR SEAT RECLINING, NO.2 RH	1	◆	
71878-0C050				COVER, RR SEAT RECLINING, INNER RH	1	◆	
71878-0C060	A	B		COVER, RR SEAT RECLINING, INNER RH	1	◆	
71879-0C050	A	B		COVER, RR SEAT RECLINING, INNER LH	1	◆	
71879-0C050	A	B		LEVER, RR SEAT RECLINING RELEASE, LH	1	◆	
72736-0C010			72736-2001L	GAP RECLINING ADJUSTER KNOB	1	◆	
72572-0C020	A	B		COVER, RR SEAT CUSHION UNDER, LH	1	◆	
72928-0C030	A	B	72928-2001L	COVER, RR SEAT CUSHION UNDER, LH	1	◆	
71395-0C030			71395-2001L	COVER, OTR SEAT HINGE, RH	1	◆	
71396-0C010	B	B	71396-2001L	COVER, OTR SEAT HINGE, LH	1	◆	
71397-0C020	B	C	71397-2001L	COVER, OTR SEAT HINGE, UPR RH	1	◆	
71398-0C020	B	C	71398-2001L	COVER, OTR SEAT HINGE, UPR LH	1	◆	
71691-0C060			71691-2001P	COVER, RR SEAT CUSHION HINGE, NO.1	1	◆	
71692-0C050			71692-2001P	COVER, RR SEAT CUSHION HINGE, NO.2	1	◆	
72927-0C070			72927-2001M	COVER, RR SEAT CUSHION UNDER	1	◆	
72657-0C010				SPACER RECLINING LWR ARM	1	◆	
71385-0C020				BRACKET, RR SEAT CUSHION HOLDER, RH	1	◆	
71386-0C030				BRACKET, RR SEAT CUSHION HOLDER, LH	1	◆	

383W
 SYSTEMS, INC.
 DESIGN DEPARTMENT DATE: _____
 APPROVED: _____
 CHECKED: _____
 DRAFTER: _____

NOV 29 2005

ORIGINAL

383W REQUIRED DRAWING LIST FOR PARTS

RDDP NO. HNH2-6104

第 4 / 10 页

<AND SEAT 1/2 page>

PARTS NO.(NEW)	LEVEL		PART NO.(OLD)	PARTS NAME	QTY	RESPONSIBILITY	
	Prev.	New				TML	ASIN
79200-0C060		A	79200-200LM	SEAT ASSY. NO.2 RH	1	◆	
79210-0C060		A	79210-200LN	SEAT ASSY. NO.2 LH	1	◆	
79200-0C070		A	79200-200LN	SEAT ASSY. NO.2 RH	1	◆	
79210-0C070		A	79210-200LN	SEAT ASSY. NO.2 LH	1	◆	
79200-0C080		A	79200-200LL	SEAT ASSY. NO.2 RH	1	◆	
79210-0C080		A	79210-200LL	SEAT ASSY. NO.2 LH	1	◆	
79360-0C010		A	79360-200LL	SPRING ASSY. NO.3 SEAT CUSHION, RH	1	◆	
79370-0C010		B	79370-200LL	SPRING ASSY. NO.3 SEAT CUSHION, LH	1	◆	
71611-0C090			71611-200LN	PAD, RR SEAT CUSHION, RH	1	◆	
71612-0C090			71612-200LN	PAD, RR SEAT CUSHION, LH	1	◆	
79021-0C070			79021-200LL	COVER SUB-ASSY. NO.2 SEAT CUSHION, RH	1	◆	
79021-0C080			79021-200LN	COVER SUB-ASSY. NO.2 SEAT CUSHION, RH	1	◆	
79021-0C090			79021-200LN	COVER SUB-ASSY. NO.2 SEAT CUSHION, RH	1	◆	
79022-0C060			79022-200LL	COVER SUB-ASSY. NO.2 SEAT CUSHION, LH	1	◆	
79022-0C070			79022-200LN	COVER SUB-ASSY. NO.2 SEAT CUSHION, LH	1	◆	
79022-0C080			79022-200LN	COVER SUB-ASSY. NO.2 SEAT CUSHION, LH	1	◆	
79303-0C010		Q	79303-200LL	FRAME SUB-ASSY. NO.3 SEAT BACK, RH	1	◆	
79303-0C020		F	79303-200LL	FRAME SUB-ASSY. NO.3 SEAT BACK, RH	1	◆	
72391-0C010				PLATE RECLINING SHAFT, NO.1	2	◆	
85901-0C010		A		MOTOR SUB-ASSY. POWER SEAT	1	◆	
85901-0C020		A		MOTOR SUB-ASSY. POWER SEAT	1	◆	
72345-0C040				PIPE RECLINING, CONNECTING	1	◆	
72510-0C030				PIPE RECLINING, CONNECTING	1	◆	
72520-0C030				ADJUSTER ASSY. RECLINING SEAT, RH	1	◆	
79304-0C010		Q	79304-200LL	FRAME SUB-ASSY. NO.3 SEAT BACK, LH	1	◆	
79304-0C020		F	79304-200LM	FRAME SUB-ASSY. NO.3 SEAT BACK, LH	1	◆	
72345-0C050				PIPE RECLINING, CONNECTING	1	◆	
72510-0C040				ADJUSTER ASSY. RECLINING SEAT, LH	1	◆	
72520-0C040				ADJUSTER ASSY. RECLINING SEAT, LH	1	◆	
71651-0C150		A	71651-200LN	PAD, RR SEAT BACK, RH	1	◆	
71651-0C170		A	71651-200LN	PAD, RR SEAT BACK, RH	1	◆	
71652-0C100		A	71652-200LN	PAD, RR SEAT BACK, LH	1	◆	
71652-0C130		A	71652-200LP	PAD, RR SEAT BACK, LH	1	◆	
79023-0C060		A	79023-200LL	COVER SUB-ASSY. NO.2 SEAT BACK, RH	1	◆	
79023-0C070		A	79023-200LN	COVER SUB-ASSY. NO.2 SEAT BACK, RH	1	◆	
79023-0C080		A	79023-200LN	COVER SUB-ASSY. NO.2 SEAT BACK, RH	1	◆	
79024-0C090		A	79024-200LN	COVER SUB-ASSY. NO.2 SEAT BACK, LH	1	◆	
79024-0C070		A	79024-200LN	COVER SUB-ASSY. NO.2 SEAT BACK, LH	1	◆	
79024-0C080		A	79024-200LN	COVER SUB-ASSY. NO.2 SEAT BACK, LH	1	◆	
72620-0C020		A	72620-200LN	CABLE ASSY. RR NO.1 SEAT LOCK	1	◆	
72620-0C030			72620-200LQ	CABLE ASSY. RR NO.1 SEAT LOCK	1	◆	
79305-0C010			79305-200LL	LEG SUB-ASSY. NO.3 SEAT, RH	1	◆	
79305-0C020			79305-200LM	LEG SUB-ASSY. NO.3 SEAT, RH	1	◆	
72620-0C040		A	72620-200LP	CABLE ASSY. RR NO.1 SEAT LOCK	1	◆	
72620-0C050			72620-200LR	CABLE ASSY. RR NO.1 SEAT LOCK	1	◆	
79306-0C010			79306-200LL	LEG SUB-ASSY. NO.3 SEAT, LH	1	◆	
79306-0C020			79306-200LM	LEG SUB-ASSY. NO.3 SEAT, LH	1	◆	
71970-0C080		A	71970-200LL	HEADREST ASSY. NO.2 SEAT	1	◆	
71970-0C040		A		PAD SUB-ASSY. NO.2 SEAT HEADREST	1	◆	
71970-0C090		B		ADJUSTER SUB-ASSY. RR SEAT HEADREST	1	◆	
71970-0C010		A		COVER NO.2 SEAT HEADREST	1	◆	
71988-0C010				KNOB, RR SEAT HEADREST	1	◆	
71970-0C090		A	71970-200LM	HEADREST ASSY. NO.2 SEAT	1	◆	
71970-0C030		A		PAD SUB-ASSY. NO.2 SEAT HEADREST	1	◆	
71907-0C010		A		ADJUSTER SUB-ASSY. RR SEAT HEADREST	1	◆	
71907-0C020		B		COVER, NO.2 SEAT HEADREST	1	◆	
71981-0C020		A		COVER, NO.2 SEAT HEADREST	1	◆	
71970-0C110		A		HEADREST ASSY. NO.2 SEAT	1	◆	
71097-0C050		A		PAD SUB-ASSY. NO.2 SEAT HEADREST	1	◆	
71907-0C030		A		ADJUSTER SUB-ASSY. RR SEAT HEADREST	1	◆	
71907-0C010		B		COVER, RR SEAT HEADREST	1	◆	
71966-0C020			71966-200LN	HEADREST ASSY. RR SEAT, CTR	1	◆	
71966-0C030		A	71966-200LL	PAD SUB-ASSY. RR SEAT HEADREST	1	◆	
71966-0C040			71966-200LP	HEADREST ASSY. RR SEAT, CTR	1	◆	
71985-0C340				COVER, RR SEAT HEADREST	1	◆	
71985-0C340				COVER, RR SEAT HEADREST	1	◆	
71701-0C010		A	71701-200LN	BOARD SUB-ASSY. RR SEAT BACK, RH	1	◆	
71701-0C040		A		BOARD SUB-ASSY. RR SEAT BACK, RH	1	◆	
71702-0C030		A		BOARD SUB-ASSY. RR SEAT BACK, LH	1	◆	
71702-0C040		B		BOARD SUB-ASSY. RR SEAT BACK, LH	1	◆	
71829-0C020		A	71829-200LM	COVER, RR SEAT CUSHION, HINGE	1	◆	

ORIGINAL

APPROVED: *[Signature]*
 APPROVED: *[Signature]*
 NOV 29 2005

383W REQUIRED DRAWING LIST FOR PARTS

RDDP NO.

4NH2-6109

添付 5/12

<3ND SEAT 2/2 page>

PARTS NO.(NEW)	LEVEL		PART NO.(OLD)	PARTS NAME	QTY	RESPONSIBILITY	
	Prev.	New				TM	ASIN
71690-00090				COVER, RR SEAT CUSHION HINGE, LH	1	◆	
71691-00090			71691-200L Q	COVER, RR SEAT CUSHION HINGE, NO.1	1	◆	
71692-00090			71692-200L Q	COVER, RR SEAT CUSHION HINGE, NO.2	1	◆	
71878-00070				COVER, RR SEAT RECLINING, INNER RH	1	◆	
71878-00080				COVER, RR SEAT RECLINING, INNER RH	1	◆	
71879-00070				COVER, RR SEAT RECLINING, INNER LH	1	◆	
72057-00090				LEVER SUB-ASSY, RR SEAT LOCK CONTROL, RH	1	◆	
72615-00090				COVER, RR SEAT BACK LOOK STRIKER	1	◆	
72615-00090				COVER, RR SEAT BACK LOOK STRIKER	1	◆	
72908-00010	A	B		HANDLE SUB-ASSY, 3RD SEAT	1	◆	
72615-00090				COVER, RR SEAT BAGG LOCK STRIKER	1	◆	
72985-00060	A	B	72985-200L M	COVER, RR SEAT CUSHION, RH	1	◆	
72998-00040	A	B	72998-200L L	COVER, RR SEAT CUSHION, LH	1	◆	
71878-00090				COVER, RR SEAT RECLINING, INNER LH	1	◆	
72985-200L P				COVER, RR SEAT CUSHION, RH	1	◆	
72998-200L M				COVER, RR SEAT CUSHION, LH	1	◆	
71878-00090				COVER, RR SEAT RECLINING, INNER RH	1	◆	
72056-00040				LEVER SUB-ASSY, RR SEAT LOCK CONTROL, LH	1	◆	
72985-00070	A	B	72985-200L N	COVER, RR SEAT CUSHION, RH	1	◆	
72998-00060	A	B	72998-200L M	COVER, RR SEAT CUSHION, LH	1	◆	
71878-00090				COVER, RR SEAT RECLINING, INNER LH	1	◆	
71878-00090				COVER, RR SEAT CUSHION HINGE, LH	1	◆	
71878-00090				COVER, RR NO.3 SEAT LOCK, UPR	1	◆	
71878-00090				COVER, RR NO.3 SEAT LOCK, LWR	1	◆	
71878-00100				COVER, RR SEAT RECLINING, INNER RH	1	◆	
71878-00100				COVER, RR SEAT RECLINING, INNER LH	1	◆	
72985-00090			72985-200L Q	COVER, RR SEAT CUSHION, RH	1	◆	
72998-00070			72998-200L P	COVER, RR SEAT CUSHION, LH	1	◆	
71879-00240				BOLT, SUB SEAT	1	◆	
71879-00080				COVER, RR SEAT RECLINING, INNER LH	1	◆	

NOV 29 2006

TRIMMASTERS, INC.
 DESIGN DEPARTMENT DATE

3/24/06

DESIGNED	APPROVED	CHECKED	ORIGINATED

ORIGINAL

DESIGN PLANNING SHEET

設計計画書

TO: Aisin World Corp. of America

PURCHASING COMPANY: TEMA		RDPR NO.
<input type="checkbox"/> SUPPLIER SELECTION	<input checked="" type="checkbox"/> PRODUCTION	HAN#2 - 6121
<input type="checkbox"/> SE	<input type="checkbox"/> SERVICE	MODEL
<input type="checkbox"/> PROTOTYPE		383W
SUPPLIER NAME:		ATTACHED SHEET
Supplier Dept Name:		1 (Sheet(s))

Phone No.:	SIGNATURE
Fax No.:	
E-Mail:	NAME IN TITLES
Date:	

TOYOTA PART NO.: **72309 - 0C010 - B → C** BCI NO.: **383WP0406**

TOYOTA PART NAME: **HOOK SUB-ASSY, RECLINING CONNECTING**

TOYOTA PART NO. (OTHER)	<input type="checkbox"/> SEE ATTACHMENT	
72309 - 0C020 - C		72087 - 0C010 - B 72088 - 0C010 - B
72160 - 0C021 - A		72210 - 0C051 - A 72170 - 0C021 - A
72170 - 0C051 - A		72220 - 0C011 - A 72220 - 0C031 - A
72160 - 0C031 - A		72170 - 0C031 - A 72207 - 0C010 - D
72208 - 0C010 - D		

DESIGN & DEVELOPMENT:

NEW DESIGN MODIFICATION → REFER TO THE EXISTING NO.:

PART DEVELOPMENT RESPONSIBILITY: ATTACHED SEPARATELY

PART DEVELOPMENT SCHEDULE: ATTACHED SEPARATELY

REFERENCE CAD DATA: RELEASED NOT RELEASED

SUPPLIER COMMENTS

Structure : Refer to the attached sheet .

required performance /Test & evolution: same as before.

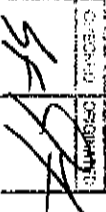
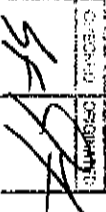
Supplier drawings for approval:
Refer to the attached sheet .

<OTHER CONFIRMATION>

TARGET COST: <input type="checkbox"/> + <input type="checkbox"/> -	VEHICLE REFERENCE PART NO.	
TARGET MASS: <input type="checkbox"/> + <input type="checkbox"/> -	/PIECE REFERENCE PART NO.	
APPROVAL DRAWING <input checked="" type="checkbox"/> REQUIRED	ISSUE PLAN DATE (RECEIPT AT ENGINEER)	07 / 1 / 15
<input type="checkbox"/> NOT REQUIRED (supplier selection, SE, prototype only)		
REFERENCE CAD DATA	ISSUE PLAN DATE (RECEIPT AT ENGINEER)	/ /
<input type="checkbox"/> REQUIRED	DATA TYPE: <input type="checkbox"/> 3D SOLID <input type="checkbox"/> 3D SURFACE <input type="checkbox"/> OTHER (/ /
<input type="checkbox"/> NOT REQUIRED	DATA FORMAT: <input type="checkbox"/> CATIA-V5 <input type="checkbox"/> PRO-E <input type="checkbox"/> OTHER (/ /
<input type="checkbox"/> FAILURE ANALYSIS	PLAN DATE (RECEIPT AT ENGINEER)	/ /
<input type="checkbox"/> DRPM <input type="checkbox"/> PFA <input type="checkbox"/> OTHER		

3834PC0203

TEMA MASTERS, INC. NOV 9 9 2006

DESIGNED BY:  CHECKED BY: 

DATE: TIME: SHEET: 1

HIINO MOTORS, LTD 岡崎管理科

383W REQUIRED DRAWING LIST FOR PARTS

HNH 2-6121

<2ND SEAT 1/3 page>

PARTS NO.(NEW)	LEVEL Prev. / New	PART NO.(OLD)	PARTS NAME	QTY	RESPONSIBILITY	
					TML	ASSN
79106-0C930	A	79100-200LN	SEAT ASSY. NO.1	1	◆	
79100-0C940	A	79100-200P	SEAT ASSY. NO.1 RH	1	◆	
79110-0C920	A	79110-200LM	SEAT ASSY. NO.1 LH	1	◆	
79100-0C910	A	79100-200L	SEAT ASSY. NO.1 RH	1	◆	
79100-0C920	A	79100-200LM	SEAT ASSY. NO.1	1	◆	
79110-0C910	A	79110-200L	SEAT ASSY. NO.1 LH	1	◆	
79100-0C970	A	79100-200S	SEAT ASSY. NO.1 RH	1	◆	
79110-0C950	A	79110-200G	SEAT ASSY. NO.1 LH	1	◆	
79100-0C960	A	79100-200R	SEAT ASSY. NO.1 RH	1	◆	
79110-0C940	A	79110-200P	SEAT ASSY. NO.1 LH	1	◆	
79100-0C950	A	79100-200G	SEAT ASSY. NO.1 RH	1	◆	
79110-0C930	A	79110-200LN	SEAT ASSY. NO.1 LH	1	◆	
71660-0C920	F	71650-200L	SPRING ASSY. RR SEAT CUSHION RH	1	◆	
71660-0C930	F		SPRING ASSY. RR SEAT CUSHION LH	1	◆	
71660-0C930	B		SPRING ASSY. RR SEAT CUSHION	1	◆	
71611-0C980	A	71611-200L	PAD. RR SEAT CUSHION RH	1	◆	
71611-0C910	A	71611-200M	PAD. RR SEAT CUSHION RH	1	◆	
71611-0C910	A		PAD. RR SEAT CUSHION RH	1	◆	
71611-0C910	A		PAD. RR SEAT CUSHION LH	1	◆	
71611-0C910	A		PAD. RR SEAT CUSHION LH	1	◆	
71612-0C980	A	71612-200L	PAD. RR SEAT CUSHION LH	1	◆	
71612-0C910	A	71612-200M	PAD. RR SEAT CUSHION LH	1	◆	
71612-0C910	A		PAD. RR SEAT CUSHION LH	1	◆	
71612-0C910	A		PAD. RR SEAT CUSHION LH	1	◆	
71612-0C910	A		PAD. RR SEAT CUSHION LH	1	◆	
71614-0C910	A	71614-200L	PAD. RR SEAT CUSHION CTR	1	◆	
71614-0C920	A		PAD. RR SEAT CUSHION CTR	1	◆	
71075-0C920		71075-200L	COVER SUB-ASSY. RR SEAT CUSHION RH	1	◆	
71075-0C930		71075-200M	COVER SUB-ASSY. RR SEAT CUSHION RH	1	◆	
71075-0C930		71075-200N	COVER SUB-ASSY. RR SEAT CUSHION RH	1	◆	
71075-0C930		71075-200P	COVER SUB-ASSY. RR SEAT CUSHION RH	1	◆	
71075-0C930		71075-200Q	COVER SUB-ASSY. RR SEAT CUSHION RH	1	◆	
87510-0C950	A	87510-200L	HEATER ASSY. SEAT	1	◆	
87510-0C950	B		HEATER ASSY. SEAT	1	◆	
87510-0C950	A		HEATER ASSY. SEAT	1	◆	
71076-0C930	A	71076-200L	COVER SUB-ASSY. RR SEAT CUSHION LH	1	◆	
71076-0C930	A	71076-200M	COVER SUB-ASSY. RR SEAT CUSHION LH	1	◆	
71076-0C930	A	71076-200N	COVER SUB-ASSY. RR SEAT CUSHION LH	1	◆	
71076-0C930	A	71076-200P	COVER SUB-ASSY. RR SEAT CUSHION LH	1	◆	
71076-0C930	A	71076-200Q	COVER SUB-ASSY. RR SEAT CUSHION LH	1	◆	
71097-0C910		71097-200L	COVER SUB-ASSY. CTR SEAT CUSHION	1	◆	
71097-0C920		71097-200M	COVER SUB-ASSY. CTR SEAT CUSHION	1	◆	
71017-0C980	G	71017-200L	FRAME SUB-ASSY. RR SEAT BACK RH	1	◆	
71017-0C990	G	71017-200M	FRAME SUB-ASSY. RR SEAT BACK RH	1	◆	
71017-0C910	G	71017-200N	FRAME SUB-ASSY. RR SEAT BACK RH	1	◆	
71018-0C960	G	71018-200L	FRAME SUB-ASSY. RR SEAT BACK LH	1	◆	
71018-0C970	G	71018-200M	FRAME SUB-ASSY. RR SEAT BACK LH	1	◆	
71018-0C980	G	71018-200N	FRAME SUB-ASSY. RR SEAT BACK LH	1	◆	
71305-0C910	D	71305-200L	FRAME SUB-ASSY. CTR SEAT BACK	1	◆	
71651-0C940	A	71651-200L	PAD. RR SEAT BACK RH	1	◆	
71651-0C910	A	71651-200M	PAD. RR SEAT BACK RH	1	◆	
71651-0C910	A	71651-200N	PAD. RR SEAT BACK RH	1	◆	
71651-0C910	A	71651-200Q	PAD. RR SEAT BACK RH	1	◆	
71651-0C910	A		PAD. RR SEAT BACK RH	1	◆	
71651-0C910	A		PAD. RR SEAT BACK RH	1	◆	
71652-0C990	A	71652-200L	PAD. RR SEAT BACK LH	1	◆	
71652-0C910	A	71652-200M	PAD. RR SEAT BACK LH	1	◆	
71652-0C910	A	71652-200N	PAD. RR SEAT BACK LH	1	◆	
71652-0C910	A	71652-200Q	PAD. RR SEAT BACK LH	1	◆	
71652-0C910	A		PAD. RR SEAT BACK LH	1	◆	
71652-0C910	A		PAD. RR SEAT BACK LH	1	◆	
71667-0C910	B	71667-200L	PAD. RR SEAT BACK CTR	1	◆	
71667-0C920	B		PAD. RR SEAT BACK CTR	1	◆	
71077-0C910	A	71077-200L	COVER SUB-ASSY. RR SEAT BACK RH	1	◆	
71077-0C920	A	71077-200M	COVER SUB-ASSY. RR SEAT BACK RH	1	◆	
71077-0C930	A	71077-200N	COVER SUB-ASSY. RR SEAT BACK RH	1	◆	
71077-0C930	A	71077-200LN	COVER SUB-ASSY. RR SEAT BACK RH	1	◆	
71077-0C930	A	71077-200LP	COVER SUB-ASSY. RR SEAT BACK RH	1	◆	
71077-0C930	A	71077-200LQ	COVER SUB-ASSY. RR SEAT BACK RH	1	◆	
87530-0C930	A		HEATER ASSY. SEAT BACK	1	◆	
71078-0C920	B	71078-200LL	COVER SUB-ASSY. RR SEAT BACK LH	1	◆	
71078-0C920	B	71078-200LM	COVER SUB-ASSY. RR SEAT BACK LH	1	◆	
71078-0C920	B	71078-200LN	COVER SUB-ASSY. RR SEAT BACK LH	1	◆	
71078-0C920	B	71078-200LP	COVER SUB-ASSY. RR SEAT BACK LH	1	◆	
71078-0C920	B	71078-200LQ	COVER SUB-ASSY. RR SEAT BACK LH	1	◆	
71095-0C910		71095-200L	COVER SUB-ASSY. CTR SEAT BACK	1	◆	
71095-0C920		71095-200LM	COVER SUB-ASSY. CTR SEAT BACK	1	◆	

ORIGINAL

383W 2 NOV 2 11:30 AM 11/11/93

383W REQUIRED DRAWING LIST FOR PARTS

HNH2-6121

<2ND SEAT 2/3 page>

PARTS NO.(NEW)	LEVEL Prev. New	PART NO.(OLD)	PARTS NAME	QTY	RESPONSIBILITY	
					TMI	ASIN
72067-0C010	A	72067-200LL	LEVER SUB-ASSY, RR BACK LOCK CONTROL RH	1	◆	◆
72620-0C010		72620-200LLM	CABLE ASSY, RR NO.1 SEAT LOCK	1	◆	◆
72069-0C030			CABLE ASSY, RR NO.1 SEAT LOCK	1	◆	◆
72069-0C020	A	72069-200LL	CABLE SUB-ASSY, RR SEAT BACK LOCK CONT	1	◆	◆
72180-0C021	A		CABLE SUB-ASSY, RR SEAT BACK LOCK CONT	1	◆	◆
72170-0C021	A		TRACK ASSY, RR NO.1 SEAT, OUTER RH	1	◆	◆
72173-0C030		72173-200LLN	TRACK ASSY, RR NO.1 SEAT, INNER RH	1	◆	◆
72207-0C010	C	72207-200LL	HANDLE, RR SEAT TRACK ADJUSTING	1	◆	◆
72309-0C010	B	72309-200LL	PLATE SUB-ASSY, SEAT TRACK STOP	1	◆	◆
72309-0C020	B	72309-200LL	HOOK SUB-ASSY, RECLINING CONNECTING	1	◆	◆
72369-0C010	B	72369-200LM	HOOK SUB-ASSY, RECLINING CONNECTING	1	◆	◆
72369-0C010			BRACKET, SIDE SUPPORT NUT HOLD, RH	1	◆	◆
72369-0C010			BRACKET, SIDE SUPPORT NUT HOLD, LH	1	◆	◆
72630-0C010	D	72630-200LL	ADJUSTER ASSY, RR NO.1 SEAT, INNER RH	1	◆	◆
72104-0C030	A	72104-200LL	CABLE SUB-ASSY, RR SEAT RECLINING CONT	1	◆	◆
72730-0C080	D	72730-200LL	ADJUSTER ASSY, RR NO.1 SEAT, OUTER RH	1	◆	◆
71461-0C020			SPRING, RR SEAT CUSHION, NO.1	1	◆	◆
72068-0C010	A	72068-200LL	LEVER SUB-ASSY, RR BACK LOCK CONTROL, LH	1	◆	◆
72620-0C010		72620-200LLM	CABLE ASSY, RR NO.1 SEAT LOCK	1	◆	◆
72620-0C030			CABLE ASSY, RR NO.1 SEAT LOCK	1	◆	◆
72069-0C030			CABLE SUB-ASSY, RR SEAT BACK LOCK CONT	1	◆	◆
72208-0C010	C	72207-200LM	PLATE SUB-ASSY, OUT SEAT TRACK LOCK, LH	1	◆	◆
72210-0C051	A		TRACK ASSY, RR NO.1 SEAT, OUTER LH	1	◆	◆
72220-0C011	A		TRACK ASSY, RR NO.1 SEAT, INNER LH	1	◆	◆
72220-0C031	A		TRACK ASSY, RR NO.1 SEAT, INNER LH	1	◆	◆
72640-0C010	D	72640-200LL	ADJUSTER ASSY, RR NO.1 SEAT, INNER LH	1	◆	◆
72640-0C020	B	72640-200LL	ADJUSTER ASSY, RR NO.1 SEAT, INNER LH	1	◆	◆
72222-0C030			BRACKET, SEAT TRACK LOCK LEVER, LH	1	◆	◆
72740-0C100	D	72740-200LL	ADJUSTER ASSY, RR NO.1 SEAT, OUTER LH	1	◆	◆
72030-0C010		72030-200LLM	ADJUSTER ASSY, RR NO.1 SEAT	1	◆	◆
72180-0C031	A		TRACK ASSY, RR NO.1 SEAT, OUTER RH	1	◆	◆
72170-0C031	A		TRACK ASSY, RR NO.1 SEAT, INNER RH	1	◆	◆
72170-0C051	A		TRACK ASSY, RR NO.1 SEAT, INNER RH	1	◆	◆
72173-0C040	A	72173-200LP	HANDLE, RR SEAT TRACK ADJUSTING	1	◆	◆
72187-0C010		72187-200LL	BRACKET, RR SEAT TRACK	1	◆	◆
72704-0C040	A	72704-200LLM	CABLE SUB-ASSY, RR SEAT RECLINING CONT	1	◆	◆
71940-0C030		71940-200LL	HEADREST ASSY, RR SEAT	1	◆	◆
71909-0C030		71909-200LL	COVER SUB-ASSY, RR SEAT HEADREST	1	◆	◆
71980-0C210			HEADREST ASSY, RR SEAT HEADREST	1	◆	◆
71909-0C280			COVER SUB-ASSY, RR SEAT HEADREST	1	◆	◆
71960-0C290		71960-200LL	HEADREST ASSY, RR SEAT, QTR	1	◆	◆
71909-0C270		71909-200LN	COVER SUB-ASSY, RR SEAT HEADREST	1	◆	◆
71701-0C020	A	71701-200LL	BOARD SUB-ASSY, RR SEAT BACK, RH	1	◆	◆
71701-0C030	A	71701-200LLM	BOARD SUB-ASSY, RR SEAT BACK, RH	1	◆	◆
71701-0C050	A	71701-200LLM	BOARD SUB-ASSY, RR SEAT BACK, RH	1	◆	◆
71701-0C060	A		BOARD SUB-ASSY, RR SEAT BACK, RH	1	◆	◆
71701-0C010	A	71702-200LL	BOARD SUB-ASSY, RR SEAT BACK, LH	1	◆	◆
71702-0C020	A	71702-200LLM	BOARD SUB-ASSY, RR SEAT BACK, LH	1	◆	◆
71702-0C050	A		BOARD SUB-ASSY, RR SEAT BACK, LH	1	◆	◆
71702-0C060	A		BOARD SUB-ASSY, RR SEAT BACK, LH	1	◆	◆
71087-0C010	A	71087-200LL	BOARD SUB-ASSY, RR SEAT BACK, QTR	1	◆	◆
71087-0C020	A		BOARD SUB-ASSY, RR SEAT BACK, QTR	1	◆	◆

383W
 APPROVED BY: [Signature]
 DATE: [Blank]
 PREPARED BY: [Signature]
 DATE: [Blank]
 CHECKED BY: [Signature]
 DATE: [Blank]

ORIGINAL

